

# The Barn Croft Newsletter

*Courage, Love, Excellence*

Dear Parents and Carers,

We are now generating solar energy! Thank you for all your fundraising efforts with the crowdfunder as we have now managed to complete the install and start our journey to greener energy! A huge thank you to all those involved in this process to get from the initial idea to the reality of 128 solar panels on our roof!

Year 2 attended workshops at William Morris Gallery this week as part of the 'kids take over museums' programme. They had lots of great experiences and learned a range of new artwork skills. Many thanks for parents who attended to support and for staff for arranging these experiences. Some children from Years 3, 4, 5 and 6 attended sports hall athletics events at Peter May, the children spoke really highly of their experiences there and Mrs Sandy noted that we have some really talented athletes in our school. The children had a really good time and spoke about their favourite athletics activities from the event. Well done to all that attended, there were lots of wins but also some great sportpersonship when they did not win – they really reflected Barn Croft's values at all events.

This week has been anti-bullying week and Helen led NSPCC assemblies on speaking out and staying safe. Children completed follow up work in class around bullying, in all its forms, and how we can keep ourselves safe and report anything that is unkind. Please use the NSPCC resources (linked in the letter) to further discuss with your children at home.

Thank you to all those who attended parent's evening meetings this week, the feedback from parents was overall very positive and I trust it was valuable to have the opportunity to look at your child's books. If you did not attend, please book an appointment with the office as these meetings are a requirement.

Finally, our School Improvement Partner visited Barn Croft this week, she commented on the children's fantastic emotional literacy, saying that this was the best she had ever seen in a school, the children were articulate and able to speak with confidence and clarity about their school, what had improved about their learning and what they would like to see in further develop in their learning in the future – well done to all our children!

Please note that the Winter Fair is on Sunday 10<sup>th</sup> December 2023 – there will be lots going on, including the REAL Santa in his Grotto! Please do speak to your class rep for Friends of Barn Croft if you can help in any way and please make sure that you come along with friends and family on the day to enjoy the event and raise desperately needed funds for the school.

## What else have staff been doing this week?

- All class based staff attended training at another school on Monday to share best practice and to complete training on integrating challenge and stretch in all lessons effectively
- Solar for Schools have completed the install of the solar panels
- Our School Improvement Partner visited school this week to meet with leadership team, conduct shared learning walks, review books and conference with pupils. Her report will support school to take the next steps in our journey.
- Curriculum newsletters have been completed and sent out to parents
- Staff conducted two parents evening sessions – **if you did not attend please call the office to rebook as soon as possible** as these are a vital part of your child's education and important that you attend as parents to be clear on where your child is at as well as to discuss any concerns parents/teachers may have

Have a restful weekend!

Miss Kelly  
Acting Headteacher

## Key Diary Dates

**6th December**

Flu Vaccinations

**10th December**

Winter Fair 12-3pm  
SEND quiet time 11am-12pm

**12th December**

Yr1 & Yr2 Christmas show  
**9:30-10:30am Parents Welcome**

**13th December**

EYFS Christmas show  
**9:30-10:30am Parents Welcome**

**21st December**

Last day of Term  
**2:00pm finish**

## Non Uniform Day

**Friday 24<sup>th</sup>  
November**

**Reception**

## Hot Chocolate Friday

Reception – Victor

Year 1 – Yasmin

Year 2 – Zara

Year 3 – Cora

Year 4 – Audrey

Year 5 – Addan

Year 6 - Edie



*Stars of the Week*

Certificates this week have been awarded for *Mental Maths Reception – Benji & Olive*

*Year 1 – Muhib & Suellen*

*Year 2 – Miriam & Rosie*

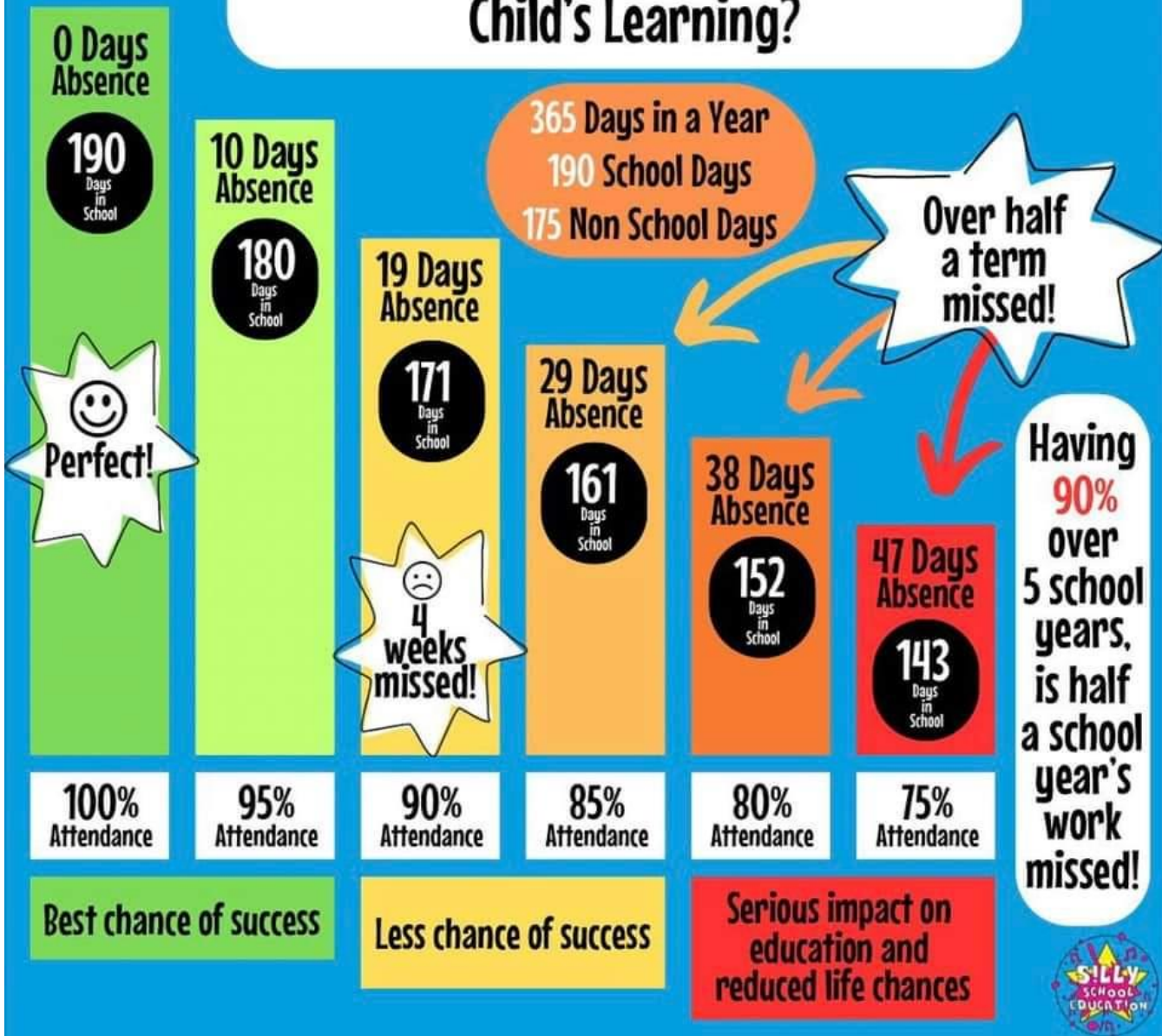
*Year 3 – Aidan & Morris*

*Year 4 – Maham & Theo*

*Year 5 – Indi & Mikel*

*Year 6 – Bilal & Eliza*

## How Does School Attendance Affect a Child's Learning?



Entry:  
Adults £1  
Kids Free

Join us for some festive fun at  
Friends of Barn Croft's

# Winter FAIR

**SUNDAY 10TH  
DECEMBER**

**12-3PM**

**SEND quiet time 11am-12pm**



Cakes & Bakes. Hot Food & Drinks

Arts & Crafts. Festive Nails

Games. Music & Barn Croft Choir

Wildlife Garden Grotto & More



2 Brunel Road, E17 8SB

## School Nurse Team

Thgpcg.wf0-19SPA1@nhs.net

0300 033 6200

Our Community Nursery Nurses are providing monthly drop-in sessions in Waltham Forest Primary schools, offering advice, support and signposting on a range of topics including  
Healthy eating, height- weight management  
sleep routine, hygiene, toileting  
hearing and vision, child development

Available to all parents and pupils every month. Following dates in school;  
Wednesday 13th December



# MAKE A MINATURE WORLD

OF LOCKDOWN MEMORIES

**Family friendly  
art workshop**

SAT 25TH NOV  
10.30AM - 12.30PM  
THE MILL, E17

FREE DROP IN

*plus visit our  
minature exhibition*







**SEND  
FAMILY SUPPORT  
GROUPS**

Open to parents and carers of children aged 5-18 with SEND in mainstream schools in Waltham Forest. Come along and share experiences, discuss ideas, explore resources and develop a support network. All led by specialist Advisory Teachers.

To join us book online at: **Eventbrite**

<b>Down's Syndrome</b>	<b>Monday 25<sup>th</sup> September 2023</b>	<a href="https://www.eventbrite.co.uk/e/downs-syndrome-family-support-group-onsite-and-virtual-tickets-711179686587?aff=odcleoeventsincollection">https://www.eventbrite.co.uk/e/downs-syndrome-family-support-group-onsite-and-virtual-tickets-711179686587?aff=odcleoeventsincollection</a>
	<b>10.30-11.30</b>	Virtual or onsite Flourish outreach services, Macdonald Road, Walthamstow, E17 4AZ
	<b>Monday 27<sup>th</sup> November 2023</b>	<a href="https://www.eventbrite.co.uk/e/downs-syndrome-family-support-group-onsite-and-virtual-tickets-711200268147?aff=odcleoeventsincollection">https://www.eventbrite.co.uk/e/downs-syndrome-family-support-group-onsite-and-virtual-tickets-711200268147?aff=odcleoeventsincollection</a>
	<b>10.30-11.30</b>	Virtual or onsite Flourish outreach services, Macdonald Road, Walthamstow, E17 4AZ
<b>Autism</b>	<b>Tuesday 10<sup>th</sup> October 2023</b>	<a href="https://www.eventbrite.co.uk/e/autism-family-support-group-onsitevirtual-tickets-715196691557?aff=odcleoeventsincollection">https://www.eventbrite.co.uk/e/autism-family-support-group-onsitevirtual-tickets-715196691557?aff=odcleoeventsincollection</a>
	<b>11.30- 12.30pm</b>	Virtual or onsite Flourish outreach services, Macdonald Road, Walthamstow, E17 4AZ
	<b>Tuesday 28<sup>th</sup> November 2023</b>	<a href="https://www.eventbrite.co.uk/e/autism-family-support-group-onsite-and-virtual-tickets-715200222117?aff=odcleoeventsincollection">https://www.eventbrite.co.uk/e/autism-family-support-group-onsite-and-virtual-tickets-715200222117?aff=odcleoeventsincollection</a>
	<b>11.30- 12.30pm</b>	Virtual or onsite Flourish outreach services, Macdonald Road, Walthamstow, E17 4AZ

## Educational Psychology Service Free Monthly Parent/Carer Consultation Sessions

### **Dates:**

20th September 2023  
18th October 2023  
22nd November 2023  
6th December 2023  
17th January 2024  
28th February 2024  
27th March 2024  
24th April 2024  
22nd May 2024  
19th June 2024  
17th July 2024

To book a 30 minute  
consultation, please  
contact our  
Business  
Support Officer  
below

### **EDUCATIONAL PSYCHOLOGY SERVICE**

Thorpe Hall School  
123 Hale End Road  
E17 4DP

Office  
02084961732 07776 589 597

Do you have concerns about your  
child?

Would you like to talk to an  
Educational  
Psychologist in confidence?

### **Appointment Only Sessions**

Afternoon sessions are 12.30-2pm  
Evening Sessions are 3.30- 5.00

**Individual consultation with an Educational  
Psychologist are offered via phone/zoom or in person for  
Parents and Carers living in London Borough Waltham  
Forest.**

**Sessions last for no more than 30 minutes and provide an  
opportunity to ask any questions or discuss concerns  
with a member of our culturally diverse Educational  
Psychology Team.**

Educational Psychologists are qualified specialists in child psychology and child development, with particular expertise in supporting children and young people with special educational needs, learning difficulties, and social, emotional and behaviour difficulties. All LBWF Educational Psychologists are registered with the Health Care Professionals Council.

[educationalpsychologyservice@walthamforest.gov.uk](mailto:educationalpsychologyservice@walthamforest.gov.uk)



# Barn Croft Primary School Calendar 2023-2024

## **Autumn Term 2023** (74 days)

Monday 4<sup>th</sup> September  
Tuesday 5<sup>th</sup> September

Staff Training Day – **School Closed**  
Staff Training Day – **School Closed**

**Wednesday 6<sup>th</sup> September**

**School Starts**

Friday 20<sup>th</sup> October

School Ends – Last Day of Half-Term

Monday 23<sup>rd</sup> October - Friday 27<sup>th</sup> October

Half-Term Holiday – **School Closed**

**Monday 30<sup>th</sup> October**

**School Starts**

Monday 13<sup>th</sup> November

Staff Training Day – **School Closed**

**Thursday 21<sup>st</sup> December**

**School Ends at 2:00pm** - Last Day of Term

Friday 22<sup>nd</sup> December – Friday 5<sup>th</sup> January

Christmas Holiday – **School Closed**

## **Spring Term 2024** (54 days)

Monday 8<sup>th</sup> January

Staff Training Day – **School Closed**

**Tuesday 9<sup>th</sup> January**

**School Starts**

Friday 9<sup>th</sup> February

School Ends – Last Day of Half-Term

Monday 12<sup>th</sup> February - Friday 16<sup>th</sup> February

Half-Term Holiday – **School Closed**

**Monday 19<sup>th</sup> February**

**School Starts**

Thursday 28<sup>th</sup> March

**School Ends at 2:00pm** - Last Day of Term

Friday 29<sup>th</sup> March – Friday 12<sup>th</sup> April

Easter Holiday – **School Closed**

## **Summer Term 2024** (67 days)

Monday 15<sup>th</sup> April

Staff Training Day – **School Closed**

**Tuesday 16<sup>th</sup> April**

**School Starts**

Monday 6<sup>th</sup> May

Bank Holiday – **School Closed**

**Friday 24<sup>th</sup> May**

School Ends – Last Day of Half-Term

Monday 27<sup>th</sup> May - Friday 31<sup>st</sup> May

Half-Term Holiday – **School Closed**

**Monday 3<sup>rd</sup> June**

**School Starts**

**Wednesday 24<sup>th</sup> July**

**School Ends at 2:00pm** - Last Day of Term