

The Barn Croft Newsletter

Courage, Love, Excellence

Dear Parents and Carers,

Welcome back to a brand new term, and what a fantastic start it's been! It's been so wonderful to see everyone settling back into school life so seamlessly. The children have come through the door with bright smiles and a thirst for learning, and it's been a joy to witness their enthusiasm in the classrooms.

Behind the scenes, your tireless teachers haven't been napping either! This week saw them diving deep into specialist SEND training hosted by the West Walthamstow Partnership, all in pursuit of ensuring every child can reach their full potential. They've also been honing their skills with quality first teaching training and phonics refreshers, making sure that their teaching toolbox is overflowing with exciting and effective strategies.

Speaking of new faces, you will have read about Ms Tierney joining our team. Well, let me tell you, she's hit the ground running! She's already visited every class, met countless children, and collaborated with teachers and teaching assistants to spark even more magic in our classrooms. We're so excited to see the fruits of her expertise blossom in the weeks to come.

And now, a huge thank you to all of you who have responded to our wish list and made generous donations. Every single gift, big or small, is truly appreciated and will add a sprinkle of extra brilliance to our curriculum and enrich the children's learning experiences. We'll keep the list updated, so feel free to keep an eye out for new ways to contribute.

Now, onto some important dates for your diary: Parents' evenings are just around the corner on Tuesday 20th and Thursday 22nd February. These meetings will be all about your child's academic progress, highlighting their strengths and areas for development, and offering tips on how you can support their learning journey at home. We will be sending details on booking your appointments later this term.

Finally, to give you a sneak peek into your child's upcoming learning adventures, curriculum newsletters are winging their way to your inboxes via Parentmail today. Be sure to check them out for an overview of what's in store for this half term (remember, it's a short half term, so some exciting lessons will spill over into the next!).

That's all for now, folks! Once again, a big thank you for your continued support and partnership. Here's to a term filled with learning, enquiry, and endless possibilities!

Have a restful weekend!

Miss Kelly
Acting Headteacher

Key Diary Dates

9th February
Last day of Term

12th Feb – 16th Feb
Half Term Holiday
School Closed

19th February
Children return to school

20th February
Parents Evening
3:40-7:00pm

22nd February
Parents Evening
3:40-5:30pm

28th March
Last day of Term
School ends at 2pm

29th March – 12th April
Easter Holidays
School Closed

15th April
Staff Training Day
School Closed

16th April
Children return to School



Certificates this week have been awarded for *Great start to the Term*

Reception – Isaiah & Rhidian

Year 1 – Muhib & Elisa

Year 2 – Annie & Robyn

Year 3 – Fionn & Hannah

Year 4 – Lilly-Hazel & Martha

Year 5 – Max & Mikel

Year 6 – Nassim & Yousra

Hot Choc Friday
Reception – Suhaan

Year 1 – Digby

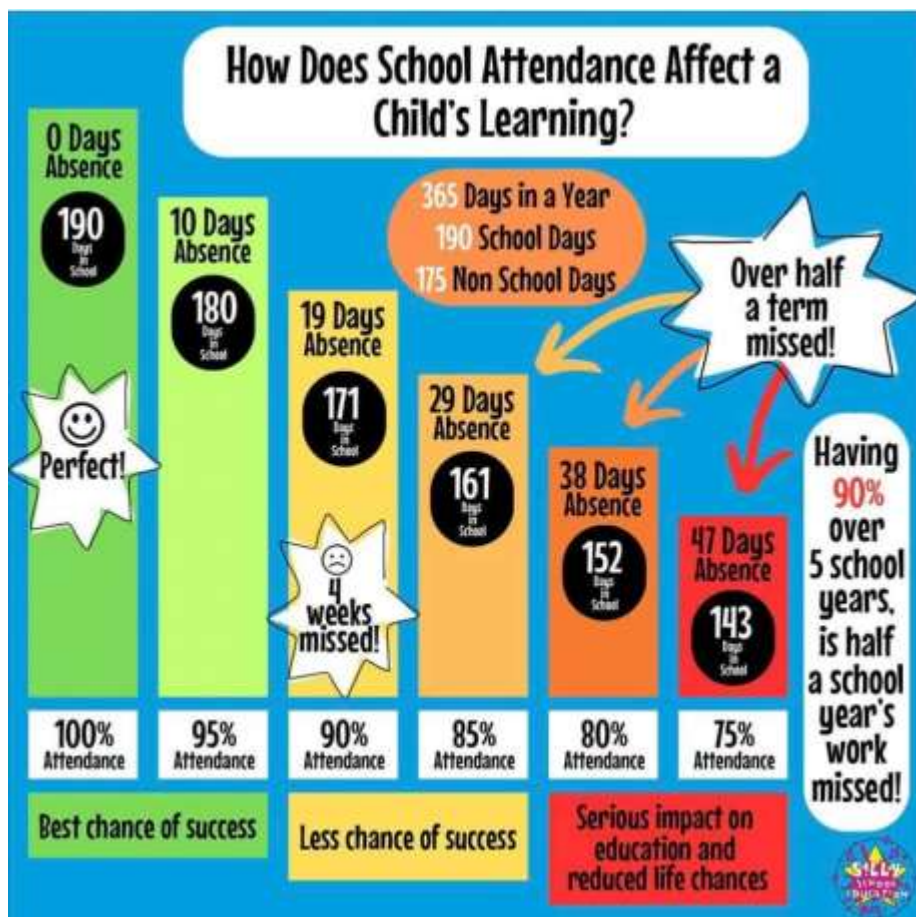
Year 2 – Gurnav

Year 3 – Ferial

Year 4 – Martha

Year 5 – Frankie

Year 6 – Margot



After School Clubs start back week commencing 15th January. Please book through parentmail.

Non –Uniform
Friday 19th January
Year 2
&
Year 5

School Health Team Waltham Forest

Thgpcg.wf0-19SPA1@nhs.net

0300 033 6200

Drop-in sessions:

Our Community Nursery Nurses are providing monthly drop-in sessions in Waltham Forest Primary schools, offering advice, support and signposting on a range of topics including:

Healthy eating, height- weight management
sleep routine, hygiene, toileting
hearing and vision, child development

Available to all parents and pupils every month. Dates are;

Wednesday 24th Jan
Wednesday 7th Feb
Wednesday 6th March
Wednesday 17th April
Wednesday 15th May
Wednesday 12th June
Wednesday 10th July



YEAR 6 TRIP TO
GILWELL PARK
4th June – 7th June

Don't forget you can start to make payments towards the Gilwell Park trip.

"SHOW UP COLLECTIVE" PRESENTS...

MAKE NEW FRIENDS

LEARN TO IMPROVISE

TELL STORIES

ENHANCE PUBLIC SPEAKING

IMPROVE COMMUNICATION

BUILD CONFIDENCE

PLAY GAMES AND MORE!


IMPROV CLASSES FOR KIDS

FOR AGES 8-11

WEDNESDAY EVENINGS
5-6 PM

IN WALTHAMSTOW

CENTRE 1
1 CHURCH HILL
WALTHAMSTOW



BOOK ONLINE @
WWW.SHOWUPCOLLECTIVE.CO.UK

WALTHAM FOREST ADULT LEARNING SERVICE



Help your child grow and thrive! Family Learning



Our family learning programme delivers a variety of courses, workshops and events both in person, online and at different venues in Waltham Forest - courses and workshops are free for families.

List of upcoming courses / workshops

Course Title	Venue	Date	Time	Day
Calm Parents, Calm Children 5 weeks	Leyton Children and Family Hub Queens Road	10.01.2024	10:00 – 12:00 pm	Wednesday
Families make a bird feeder	The Junction Centre E11	20.01.2024	10:00-12:00pm	Saturday
Monthly Craft Club	Queens Road learning centre	20.1.2024	10-12pm	Saturday
Storytelling and crafts for Chinese New Year	Walthamstow Library	03.02.2024	12:30-2:30pm	Saturday
Valentines crafts for your loved ones	Walthamstow Library	10.02.2024	12:30-2:30pm	Saturday
Family craft workshop – Half term	Lea Bridge Road Library	14.02.2024	1:15 – 3:15pm	Saturday

If you have any questions regarding family learning activities, please contact - cherie.cowan-smith@walthamforest.gov.uk Curriculum Manager Family Learning



Educational Psychology Service Free Monthly Parent/Carer Consultation Sessions

Dates:

20th September 2023
18th October 2023
22nd November 2023
6th December 2023
17th January 2024
28th February 2024
27th March 2024
24th April 2024
22nd May 2024
19th June 2024
17th July 2024

To book a 30 minute consultation, please contact our Business Support Officer below

EDUCATIONAL PSYCHOLOGY SERVICE

Thorpe Hall School
123 Hale End Road
E17 4DP

Do you have concerns about your child?

Would you like to talk to an Educational Psychologist in confidence?

Appointment Only Sessions

Afternoon sessions are 12.30-2pm
Evening Sessions are 3.30 – 5.00

Individual consultation with an Educational Psychologist are offered via phone/zoom or in person for Parents and Carers living in London Borough Waltham Forest.

Sessions last for no more than 30 minutes and provide an opportunity to ask any questions or discuss concerns with a member of our culturally diverse Educational Psychology Team.

Educational Psychologists are qualified specialists in child psychology and child development, with particular expertise in supporting children and young people with special educational needs, learning difficulties, and social, emotional and behavioural difficulties. All LBWF Educational Psychologists are registered with the Health Care Professionals Council.

educationalpsychology@walthamforest.gov.uk

Office
02084961732 07776 589 597

Enrol now through our website - www.lbwfadultlearning.co.uk
For more information email adult.learning@walthamforest.gov.uk



Healthy Families Group Programme



Do you have a child under 5? This free 8 week programme provides everything you need to help your child get off to a great start. All parents & carers are welcome!

We cover the following themes across 8 weeks:

- Feeling more confident as a parent
- Physical activities for the little ones
- What children and the whole family eat
- Family lifestyle habits
- Enjoying life as a family

Creche provided



NEW programmes starting January 2024:

- Mondays 9:30-11:30am at Paradox Centre
- Tuesdays 1-3pm, Leyton Family Hub
- Wednesdays 10-11am Online

Contact us to find out more



Free toolkit!
Scan to sign up



020 8496 5223
wfsupport@henry.org.uk





Barn Croft Primary School Calendar 2023-2024

Autumn Term 2023 (74 days)

Monday 4th September
Tuesday 5th September

Staff Training Day – **School Closed**
Staff Training Day – **School Closed**

Wednesday 6th September

School Starts

Friday 20th October

School Ends – Last Day of Half-Term

Monday 23rd October - Friday 27th October

Half-Term Holiday – **School Closed**

Monday 30th October

School Starts

Monday 13th November

Staff Training Day – **School Closed**

Thursday 21st December

School Ends at 2:00pm - Last Day of Term

Friday 22nd December – Friday 5th January

Christmas Holiday – **School Closed**

Spring Term 2024 (54 days)

Monday 8th January

Staff Training Day – **School Closed**

Tuesday 9th January

School Starts

Friday 9th February

School Ends – Last Day of Half-Term

Monday 12th February - Friday 16th February

Half-Term Holiday – **School Closed**

Monday 19th February

School Starts

Thursday 28th March

School Ends at 2:00pm - Last Day of Term

Friday 29th March – Friday 12th April

Easter Holiday – **School Closed**

Summer Term 2024 (67 days)

Monday 15th April

Staff Training Day – **School Closed**

Tuesday 16th April

School Starts

Monday 6th May

Bank Holiday – **School Closed**

Friday 24th May

School Ends – Last Day of Half-Term

Monday 27th May - Friday 31st May

Half-Term Holiday – **School Closed**

Monday 3rd June

School Starts

Wednesday 24th July

School Ends at 2:00pm - Last Day of Term