

# The Barn Croft Newsletter

*Courage, Love, Excellence*

Dear Parents and Carers,

Another week at Barn Croft has flown by, and what a week it's been!

This week we welcomed our School Improvement Partner (SIP), who spent the day observing lessons and chatting with staff and children. The initial feedback at the end of the visit came with some fantastic comments about the "buzz of purpose" around the school and evidence of improvements made in quality of teaching and books. This is a huge testament to the incredible hard work of our team, and I'm so proud to see it paying off for our amazing children. Remember, everyone deserves a well-deserved rest over half term – enjoy it!

We held a fantastic Maths Parent Workshop for Reception, Year 1 & 2 on Wednesday. The turnout was brilliant, and the atmosphere was buzzing with learning and fun. It was wonderful to see parents, staff, and children working together to understand how we teach maths, why we use certain methods, and how you can support your child's learning at home through fun games. Big thanks to Ms Lewis and the team for pulling off such a successful event, and don't forget to continue practising those times tables and number bonds at home with Numbots and Times Tables Rockstars! (P.S. Lost your login? Just ask your child's teacher!)

**Parents Evening:** Don't miss out! Mark your calendars, because Parents Evening is coming up on **Tuesday 20th** and **Thursday 22nd February**. Booking is open now on ParentMail, and it's first come, first served. Attending your child's meeting is crucial, as we'll be sharing their academic progress and setting targets for the rest of the year. We expect all parents to attend, so don't miss out!

And finally... Half term! Next week is half term, so take a deep breath, put your feet up, and enjoy some quality time with your little ones. They've all been working hard, and deserve a break to recharge and explore. We'll see you all bright and early on Monday 19th February!

Miss Kelly  
Acting Headteacher

## Key Diary Dates

**9th February**  
Last day of Term

**12th Feb – 16th Feb**  
Half Term Holiday  
**School Closed**

**19th February**  
**Children return to school**

**20th February**  
Parents Evening  
**3:40-7:00pm**

**22nd February**  
Parents Evening  
**3:40-5:30pm**

**28th March**  
Last day of Term  
**School ends at 2pm**

**29th March – 12th April**  
Easter Holidays  
**School Closed**

**15th April**  
Staff Training Day  
**School Closed**

**16th April**  
**Children return to School**



Certificates this week have been awarded for *History*

*Reception – Chloe & Muhammad Ali*

*Year 1 – Frankie & Suellen*

*Year 2 – Gurnav & Mabel*

*Year 3 – Alice & Aniah*

*Year 4 – Dylan H & Maham*

*Year 5 – Josephine & Taro*

*Year 6 – Joel & Rosa*

**Hot Choc Friday**

**Reception – Travis**

**Year 1 – Rufat**

**Year 2 – Betsy**

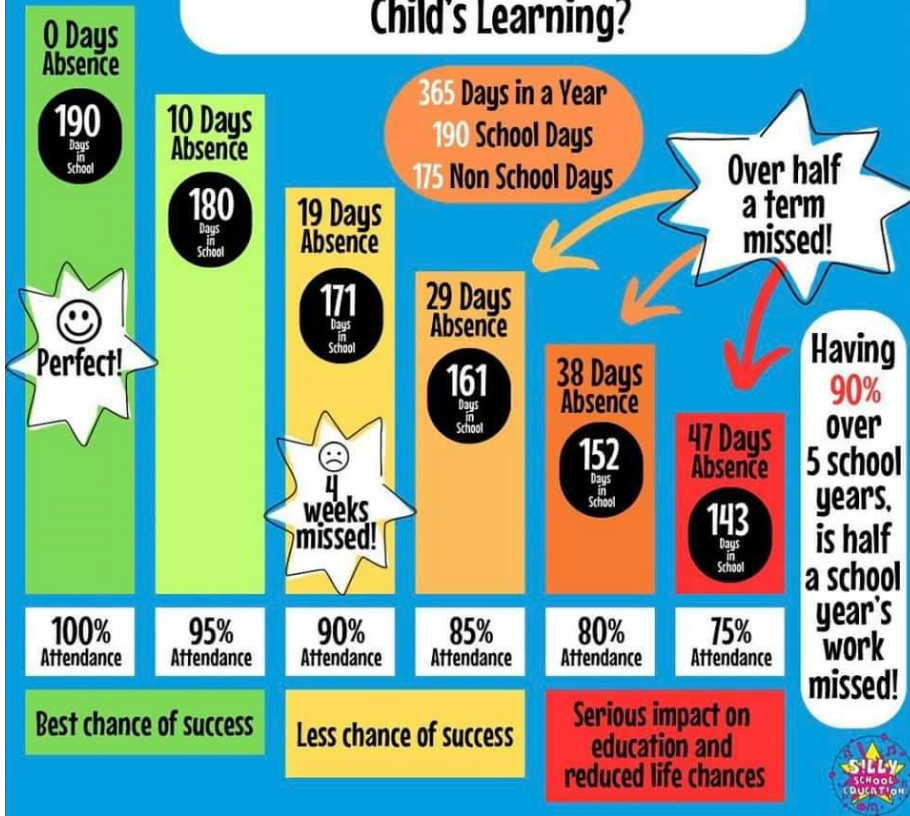
**Year 3 – Orson**

**Year 4 – Indiya**

**Year 5 – Indi**

**Year 6 - Casey**

# How Does School Attendance Affect a Child's Learning?



## Links for Support below

For families seeking alternative support during the school holidays, the Holiday Activity and Food Programme will continue to run for the next year. This programme offers school age children receiving benefit-related Free School Meals the opportunity to get involved in activities and holiday clubs and have a hot meal.

[Holiday activities in Waltham Forest | London Borough of Waltham Forest](#)

Ahead of a Government decision on the future of the Fund, we are actively lobbying the Government to maintain the Fund and recently launched a petition to extend it.

[The crisis isn't over: Don't axe our lifeline | 38 Degrees](#)

## School Health Team Waltham Forest

[Thgpcg.wf0-19SPA1@nhs.net](mailto:Thgpcg.wf0-19SPA1@nhs.net)

0300 033 6200

Drop-in sessions:

Our Community Nursery Nurses are providing monthly drop-in sessions in Waltham Forest Primary schools, offering advice, support and signposting on a range of topics including:

Healthy eating, height- weight management  
sleep routine, hygiene, toileting  
hearing and vision, child development

Available to all parents and pupils every month. Dates are;

Wednesday 6th March  
Wednesday 17th April  
Wednesday 15th May  
Wednesday 12th June  
Wednesday 10th July



## YEAR 6 TRIP TO

GILWELL PARK

4<sup>th</sup> June – 7<sup>th</sup> June

Don't forget you can start to make payments towards the Gilwell Park trip.

"SHOW UP COLLECTIVE" PRESENTS...



MAKE NEW FRIENDS



IMPROVE COMMUNICATION



LEARN TO IMPROVISE



BUILD CONFIDENCE



TELL STORIES



PLAY GAMES



ENHANCE PUBLIC SPEAKING



AND MORE!

# IMPROV CLASSES FOR KIDS

FOR AGES 8-11



BOOK ONLINE @

[WWW.SHOWUPCOLLECTIVE.CO.UK](http://WWW.SHOWUPCOLLECTIVE.CO.UK)

WEDNESDAY EVENINGS

5 - 6 PM

IN WALTHAMSTOW

CENTRE 7

1 CHURCH HILL

WALTHAMSTOW



# Maths Workshop at Barn Croft this week!









# Reading Mornings on Fridays with Reception





## Educational Psychology Service Free Monthly Parent/Carer Consultation Sessions

### Dates:

20th September 2023  
18th October 2023  
22nd November 2023  
6th December 2023  
17th January 2024  
28th February 2024  
27th March 2024  
24th April 2024  
22nd May 2024  
19th June 2024  
17th July 2024

To book a 30 minute consultation, please contact our Business Support Officer below

### EDUCATIONAL PSYCHOLOGY SERVICE

Thorpe Hall School  
123 Hale End Road  
E17 4DP

Office  
02084961732 07776 589 597

Do you have concerns about your child?

Would you like to talk to an Educational Psychologist in confidence?

### Appointment Only Sessions

Afternoon sessions are 12.30-2pm  
Evening Sessions are 3.30- 5.00

Individual consultation with an Educational Psychologist are offered via phone/zoom or in person for Parents and Carers living in London Borough Waltham Forest.

Sessions last for no more than 30 minutes and provide an opportunity to ask any questions or discuss concerns with a member of our culturally diverse Educational Psychology Team.

Educational Psychologists are qualified specialists in child psychology and child development, with particular expertise in supporting children and young people with special educational needs, learning difficulties, and social, emotional and behavioural difficulties. All LBWF Educational Psychologists are registered with the Health Care Professionals Council.

[educationalpsychologyservice@walthamforest.gov.uk](mailto:educationalpsychologyservice@walthamforest.gov.uk)



## Help your child grow and thrive! Family Learning



Our family learning programme delivers a variety of courses, workshops and events both in person, online and at different venues in Waltham Forest - courses and workshops are free for families.

### List of upcoming courses / workshops

Course Title	Venue	Date	Time	Day
Storytelling and crafts for Chinese New Year	Walthamstow Library	03.02.2024	12:30 - 2:30pm	Saturday
Mosaic Paper art	Lea Bridge library	10.02.2024	1:00 - 3:00pm	Saturday
Valentines crafts for your loved ones	Walthamstow Library	10.02.2024	12:30 - 2:30pm	Saturday
Valentines crafts for your loved ones	Wood street library	13.02.2024	10:00 -12:00pm	Tuesday
Valentines crafts for your loved ones	Lea Bridge Library	14.02.2024	1:15 - 1:35pm	Wednesday
Fabric weaving craft workshop	Leyton Children and Family Hub QR E17	15.02.2024	10:00 - 12:00pm	Thursday
Supermarket Sweep Family Fun Day	Queens Road Learning Centre	16.02.2024 17.02.2024	9:30 - 12:00pm 1:00 - 3:30 pm	Friday Saturday
World Book Day arts and crafts	Lea Bridge library	24.02.2024	1:00 - 3:00 pm	Saturday
Support your child's transition from Nursery to Primary school	Queens Road Learning Centre	21.02.2024- 28.02.2024	10:00 - 12:00pm	Wednesday
Improve your digital skills for parents	Queens Road Learning Centre	28.02.2024 - 13.03.2024	1:00 - 2:30pm	Wednesday

If you have any questions regarding family learning activities, please contact - [cherie.cowan-smith@walthamforest.gov.uk](mailto:cherie.cowan-smith@walthamforest.gov.uk) Curriculum Manager Family Learning



## STRATFORD FEBRUARY HALF TERM CAMP



### AT: CHOBHAM ACADEMY

Temple Mill Lane, Stratford, Olympic Park E20 1BD

HELD ON MONDAY 12<sup>th</sup> TO FRIDAY 16<sup>th</sup> FEBRUARY 2024,  
9AM – 3PM  
FOR BOYS AND GIRLS AGED 4 – 13

WE HAVE BEEN RUNNING OUR FOOTBALL CAMPS AND COURSES IN YOUR COMMUNITY FOR OVER 24 YEARS!

Exciting news! We are running our annual February Half Term Camp on Monday 12<sup>th</sup> to Friday 16<sup>th</sup> February 2024.

- The Camp is for 5 days from 9am-3pm. Lunch is 12.15pm-1pm, children must bring their own packed lunch and plenty of drinks.
- The camp is held on Astrotrurf football pitches and Sports Hall (If bad weather) therefore children may wear trainers or moulded sole plastic studs if playing outside.
- On Friday at 2.15pm we hold a presentation, whereby EACH CHILD WILL RECEIVE AN ENGRAVED TROPHY as well as many opportunities to win extra trophies, including the FA Cup Tournament, penalty shoot out competition, skill point winners.
- The camp is run by FA qualified coaches, who are DBS checked and are currently working with children in schools daily, enabling them to learn essential football techniques, building CONFIDENCE, improving FITNESS and providing the most important ingredient of all 'FUN'!
- The cost of the 5 day camp is £100 per child (£60 for additional brothers and sisters), £25 daily rate.

There will be consent forms to complete on arrival and payment should be made on the first morning of the camp or in advance via payment link.

[www.prosoccercoaching.org](http://www.prosoccercoaching.org)

TO RESERVE FEBRUARY CAMP PLACES  
PLEASE TEXT:

CHOBHAM CAMP+ CHILD'S FULL NAME + AGE  
and receive confirmation by text to:-  
**07456 098547**

Enrol now through our website - [www.lbwfadulthoodlearning.co.uk](http://www.lbwfadulthoodlearning.co.uk)  
For more information email [adult.learning@walthamforest.gov.uk](mailto:adult.learning@walthamforest.gov.uk)



## Supermarket Sweep Family Fun Day February 16th and 17th

Join us for fun, learning, and fantastic savings with Multiply's Supermarket Savvy Family Day! Join us on February 16th or 17th for an exciting event aimed at local parents, where families can discover the secrets to smart and budget-friendly grocery shopping.

Learn more on our website:  
[bit.ly/wf-supermarket-sweep](http://bit.ly/wf-supermarket-sweep)





## Half-term Activities

### 12th to 16th February 2024

By the **Waltham Forest Mental Health Support Team**



#### Space4All the Family

Space4all sessions are available during half term Monday 12 February to Friday 16 February 2024



#### Leyton Orient Trust

Half-Term Support 14-18 years Monday 12th and Tuesday 13th February 12pm to 2pm Score Centre E10 5JY



#### Leyton Orient Trust

Trip to Stanford Bridge aged 16 +



#### Free family friendly activities in Waltham Forest

Cycling clubs, Explore a cardboard Waltham Forest, Valentine's crafts, dancing, family supermarket sweep and more.



## Places where kids eat for free or £1 during Feb 2024



#### **ASDA**

Kids eat for £1 All Day, Every Day at Asda cafes, with no adult spend required.

#### **TESCO**

Kids eat free with a purchase of 60p+ from Mon 12th - Fri 23rd February 2024



#### **SAINSBURY'S CAFES**

Kids eat for £1 with the purchase of an adult hot main. From 11:30am every day.

#### **BEEFEATER & BREWERS FAYRE**

Two children under 16 can get a free breakfast every day with one paying adult!

#### **THE REAL GREEK**

Kids under 12 eat FREE every Sunday for every £10 spent by an adult

#### **GREENE KING PUBS**

Kids Eat Free all-day with the purchase of an adult's meal. Deal, Monday-Friday, between Mon 12th - Friday 23rd February 2024



#### **TRAVELodge & PREMIER INN**

Buy 1 Adult Breakfast from just £8.99 & up to two kids eat breakfast for free

#### **SIZZLING PUBS**

Every Monday to Friday, 3 - 7pm, kids' mains are £1 with every adult meal.



#### **TGI FRIDAYS**

Kids Eat Free When 'Stripes Rewards Members' purchase a full priced adult's main meal (App needed)

#### **IKEA**

Kids get a meal from 95p daily from 11am

#### **MORRISONS**

Spend £4.49 and get one free kids meal all day, every day.

#### **GORDON RAMSEY RESTAURANTS**

Kids under 8 eat FREE all day, every day at selected Gordon Ramsay restaurants



#### **PRETO**

Kids up to age 10 eat free all day, every day with paying adults at Preto in Half Terms

#### **YO! SUSHI**

From Mon 12th - Fri 23rd February 2024 kids eat free with every £10 adult spend

#### **BELLA ITALIA**

Children eat for £1 with any adult main. The offer is valid 4-6pm Mon to Thurs.

#### **WHITBREAD INNS**

Two kids under 16 eat for FREE with every adult breakfast purchased



#### **DOBBIES GARDEN CENTRES**

At Dobbies, for every adult breakfast or lunch purchase, kids eat for FREE. Every Day!

#### **TABLE TABLE**

Two children under 16 can get a free breakfast every day with one paying adult!

#### **PAUSA CAFE @ DUNELM**

Kids get 1 mini main, 2 snacks & a drink FREE with every £4 spend after 3pm

#### **HUNGRY HORSE**

Kids eat for £1 on Mondays

#### **FUTURE INNS**

Under 5s eat for free with any adult meal.



## Where can I get help from?

Click on the circles to find out more!



**NELFT Crisis Helpline**  
Tel: 0800 995 1000

**National Bullying Helpline**  
Tel: 0300 323 0169

**Childline**  
Tel: 0800 11111

**Samaritans**  
Tel: 116 123

**Kooth**  
Free, safe and anonymous support

**PAPYRUS**  
(Suicide prevention)  
Tel: 0800 068 4141

**Shout**  
(24/7 crisis textline) TEXT 85258

**Other support in Waltham Forest**





# Barn Croft Primary School Calendar 2023-2024

## **Autumn Term 2023** (74 days)

Monday 4<sup>th</sup> September  
Tuesday 5<sup>th</sup> September

Staff Training Day – **School Closed**  
Staff Training Day – **School Closed**

**Wednesday 6<sup>th</sup> September**

**School Starts**

Friday 20<sup>th</sup> October

School Ends – Last Day of Half-Term

Monday 23<sup>rd</sup> October - Friday 27<sup>th</sup> October

Half-Term Holiday – **School Closed**

**Monday 30<sup>th</sup> October**

**School Starts**

Monday 13<sup>th</sup> November

Staff Training Day – **School Closed**

**Thursday 21<sup>st</sup> December**

**School Ends at 2:00pm - Last Day of Term**

Friday 22<sup>nd</sup> December – Friday 5<sup>th</sup> January

Christmas Holiday – **School Closed**

## **Spring Term 2024** (54 days)

Monday 8<sup>th</sup> January

Staff Training Day – **School Closed**

**Tuesday 9<sup>th</sup> January**

**School Starts**

Friday 9<sup>th</sup> February

School Ends – Last Day of Half-Term

Monday 12<sup>th</sup> February - Friday 16<sup>th</sup> February

Half-Term Holiday – **School Closed**

**Monday 19<sup>th</sup> February**

**School Starts**

Thursday 28<sup>th</sup> March

School Ends at 2:00pm - Last Day of Term

Friday 29<sup>th</sup> March – Friday 12<sup>th</sup> April

Easter Holiday – **School Closed**

## **Summer Term 2024** (67 days)

Monday 15<sup>th</sup> April

Staff Training Day – **School Closed**

**Tuesday 16<sup>th</sup> April**

**School Starts**

Monday 6<sup>th</sup> May

Bank Holiday – **School Closed**

**Friday 24<sup>th</sup> May**

School Ends – Last Day of Half-Term

Monday 27<sup>th</sup> May - Friday 31<sup>st</sup> May

Half-Term Holiday – **School Closed**

**Monday 3<sup>rd</sup> June**

**School Starts**

**Wednesday 24<sup>th</sup> July**

**School Ends at 2:00pm - Last Day of Term**