

# The Barn Croft Newsletter

*Courage, Love, Excellence*

Dear Parents and Carers,

Firstly, I want to express my sincere gratitude to all the parents and carers who attended Parents' Evening this week. It was wonderful to see so many of you engaged and interested in your child's learning journey. I was particularly delighted to hear the overwhelmingly positive feedback about your children's attainment and progress in their reading books. It's a testament to the hard work and dedication of both our fantastic teachers and yourselves in fostering a love of reading at home. Speaking of our teachers, I want to take a moment to thank them for their late nights and meticulous preparations for Parents' Evening. Their commitment to your child's success truly shines through.

Now that you have an additional copy of your child's Times Tables Rockstars and Numbots logins, please encourage them to access these fun and engaging platforms regularly at home. This will help them solidify their understanding of key mathematical concepts and build their confidence. Additionally, please take some time to review your child's target sheets.

If you were unable to attend Parents' Evening, it's important that you connect with your child's class teacher as soon as possible. These meetings are crucial for sharing progress updates, celebrating successes, and addressing any concerns. Please reach out to the school office to arrange a call or meeting at your convenience.

This week, some of our children participated in football tournaments, gaining valuable experience in competitive scenarios. We are immensely proud of their fantastic sportsmanship, especially when faced with less-than-gracious opponents. Their determination and teamwork were truly inspiring! On another exciting note, the West Walthamstow Partnership school heads met this week to brainstorm ways to further collaborate by sharing specialist resources, facilities, and other exciting opportunities. This will undoubtedly benefit all our pupils and enrich their learning experiences.

A huge thank you to the Friends of Barn Croft and Reception parents for hosting the bake sale after school. Despite the rain and technical hiccups, it was a resounding success! Your fundraising efforts and unwavering support are truly appreciated.

During this and the coming term, we will be embarking on a project to redesign and revamp our Early Years indoor and outdoor provision. To make this vision a reality, we're seeking the support of our talented parent community for specific projects and resources. Further details to come and we hope you'll join us in creating a stimulating and engaging environment for our youngest learners.

Finally, I wish you all a restful and enjoyable weekend.

Miss Kelly

**Acting Headteacher**

## Key Diary Dates

**7th March**

World Book Day

**28th March**

Last day of Term

**School ends at 2pm**

**29th March – 12th**

**April**

Easter Holidays

**School Closed**

**15<sup>th</sup> April**

Staff Training Day

**School Closed**

**16<sup>th</sup> April**

**Children return to School**

**Non Uniform Day**

**Friday 1st March**

**Year 1**

**&**

**Year 2**



Certificates this week have been awarded for *being Kind and Polite*

*Reception – Amela & Osian*

*Year 1 – Kai & Uma*

*Year 2 – Hanaa & Rea*

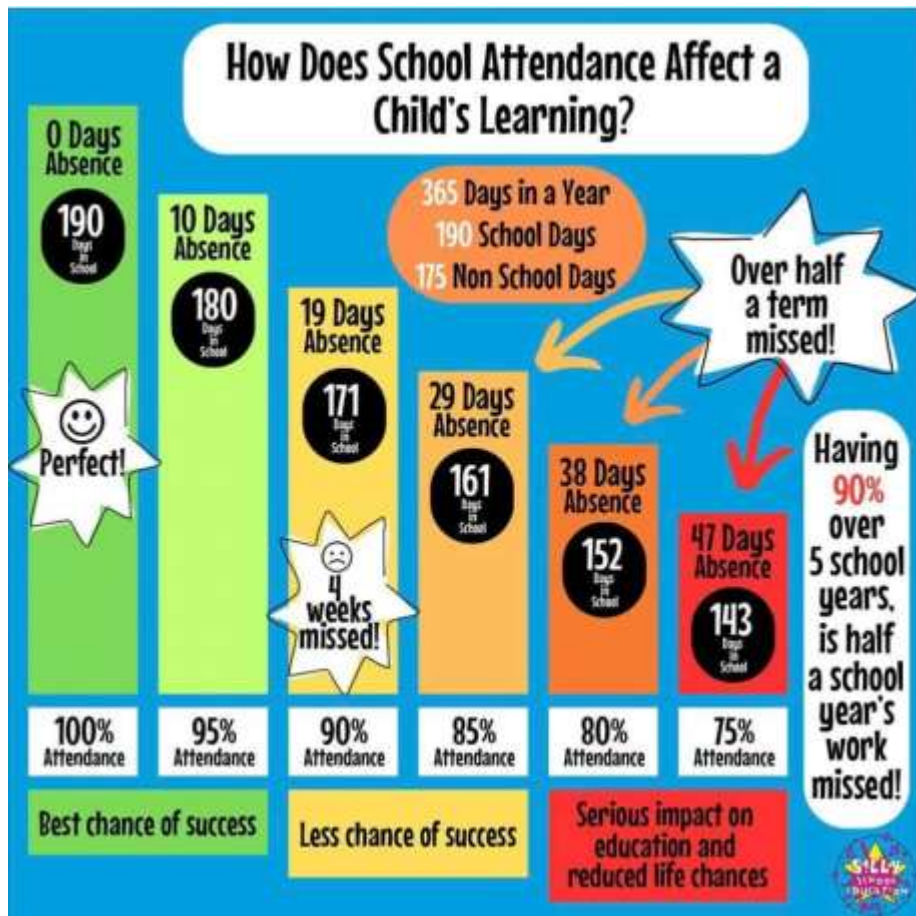
*Year 3 – Roxy & Samuel*

*Year 4 – Ami & Michael*

*Year 5 – Mikel & Schane-Jae*

*Year 6 – Thalia & Tomas*

**Hot Choc Friday**  
**Reception – Murael**  
**Year 1 – Hector**  
**Year 2 – Robin**  
**Year 3 – Morris**  
**Year 4 – Lilly-Hazel**  
**Year 5 – Grady**  
**Year 6 – George**



### Links for Support below

For families seeking alternative support during the school holidays, the Holiday Activity and Food Programme will continue to run for the next year. This programme offers school age children receiving benefit-related Free School Meals the opportunity to get involved in activities and holiday clubs and have a hot meal.

[Holiday activities in Waltham Forest | London Borough of Waltham Forest](#)

Ahead of a Government decision on the future of the Fund, we are actively lobbying the Government to maintain the Fund and recently launched a petition to extend it.

[The crisis isn't over: Don't axe our lifeline | 38 Degrees](#)

## School Health Team Waltham Forest

[Thgpcg.wf0-19SPA1@nhs.net](mailto:Thgpcg.wf0-19SPA1@nhs.net)

0300 033 6200

Drop-in sessions:

**Our Community Nursery Nurses are providing monthly drop-in sessions in Waltham Forest Primary schools, offering advice, support and signposting on a range of topics including:**

Healthy eating, height- weight management  
sleep routine, hygiene, toileting  
hearing and vision, child development

Available to all parents and pupils every month. Dates are;

Wednesday 6th March  
Wednesday 17th April  
Wednesday 15th May  
Wednesday 12th June  
Wednesday 10th July



YEAR 6 TRIP TO  
GILWELL PARK  
4<sup>th</sup> June – 7<sup>th</sup> June

Don't forget you can start to make payments towards the Gilwell Park trip.

"SHOW UP COLLECTIVE" PRESENTS...

★ MAKE NEW FRIENDS

★ LEARN TO IMPROVISE

★ TELL STORIES

★ ENHANCE PUBLIC SPEAKING

# IMPROV CLASSES FOR KIDS

FOR AGES 8-11

WEDNESDAY EVENINGS  
5-6 PM  
IN WALTHAMSTOW CENTRE  
1 CHURCH HILL  
WALTHAMSTOW

BOOK ONLINE @ [www.showupcollective.co.uk](#)

★ IMPROVE COMMUNICATION

★ BUILD CONFIDENCE

★ PLAY GAMES

★ AND MORE!

## Educational Psychology Service Free Monthly Parent/Carer Consultation Sessions

**Dates:**

20th September 2023  
18th October 2023  
22nd November 2023  
6th December 2023  
17th January 2024  
28th February 2024  
27th March 2024  
24th April 2024  
22nd May 2024  
19th June 2024  
17th July 2024

To book a 30 minute consultation, please contact our Business Support Officer below

**EDUCATIONAL PSYCHOLOGY SERVICE**

Thorpe Hall School  
123 Hale End Road  
E17 4DP

Office  
02084961732 07776 589 597

Do you have concerns about your child?

Would you like to talk to an Educational Psychologist in confidence?

**Appointment Only Sessions**

Afternoon sessions are 12.30-2pm  
Evening Sessions are 3.30- 5.00

Individual consultation with an Educational Psychologist are offered via phone/zoom or in person for Parents and Carers living in London Borough Waltham Forest.

Sessions last for no more than 30 minutes and provide an opportunity to ask any questions or discuss concerns with a member of our culturally diverse Educational Psychology Team.

Educational Psychologists are qualified specialists in child psychology and child development, with particular expertise in supporting children and young people with special educational needs, learning difficulties, and social, emotional and behaviour difficulties. All LBWF Educational Psychologists are registered with the Health Care Professionals Council.

[educationalpsychologyservice@walthamforest.gov.uk](mailto:educationalpsychologyservice@walthamforest.gov.uk)

WALTHAM FOREST  
ADULT  
LEARNING  
SERVICE



## Help your child grow and thrive! Family Learning



Our family learning programme delivers a variety of courses, workshops and events both in person, online and at different venues in Waltham Forest - courses and workshops are free for families.

### List of upcoming courses / workshops

Course Title	Venue	Date	Time	Day
Storytelling and crafts for Chinese New Year	Walthamstow Library	03.02.2024	12:30 - 2:30pm	Saturday
Mosaic Paper art	Lea Bridge library	10.02.2024	1:00 - 3:00pm	Saturday
Valentines crafts for your loved ones	Walthamstow Library	10.02.2024	12:30 - 2:30pm	Saturday
Valentines crafts for your loved ones	Wood street library	13.02.2024	10:00 -12:00pm	Tuesday
Valentines crafts for your loved ones	Lea Bridge Library	14.02.2024	1:15 - 1:35pm	Wednesday
Fabric weaving craft workshop	Leyton Children and Family Hub, QR E17	15.02.2024	10:00 - 12:00pm	Thursday
Supermarket Sweep	Queens Road Learning Centre	16.02.2024	9:30 - 12:00pm	Friday
Family Fun Day	Queens Road Learning Centre	17.02.2024	1:00 - 3:30 pm	Saturday
World Book Day arts and crafts	Lea Bridge library	24.02.2024	1:00 - 3:00 pm	Saturday
Support your child's transition from Nursery to Primary school	Queens Road Learning Centre	25.02.2024 - 28.02.2024	10:00 - 12:00pm	Wednesday
Improve your digital skills for parents	Queens Road Learning Centre	28.02.2024 - 13.03.2024	1:00 - 2:30pm	Wednesday

If you have any questions regarding family learning activities, please contact - [cherie.cowan-smith@walthamforest.gov.uk](mailto:cherie.cowan-smith@walthamforest.gov.uk) Curriculum Manager Family Learning

Enrol now through our website - [www.lbwfadullearning.co.uk](http://www.lbwfadullearning.co.uk)  
For more information email [adult.learning@walthamforest.gov.uk](mailto:adult.learning@walthamforest.gov.uk)





# Barn Croft Primary School Calendar 2023-2024

## **Autumn Term 2023** (74 days)

Monday 4<sup>th</sup> September  
Tuesday 5<sup>th</sup> September

Staff Training Day – **School Closed**  
Staff Training Day – **School Closed**

**Wednesday 6<sup>th</sup> September**

**School Starts**

Friday 20<sup>th</sup> October

School Ends – Last Day of Half-Term

Monday 23<sup>rd</sup> October - Friday 27<sup>th</sup> October

Half-Term Holiday – **School Closed**

**Monday 30<sup>th</sup> October**

**School Starts**

Monday 13<sup>th</sup> November

Staff Training Day – **School Closed**

**Thursday 21<sup>st</sup> December**

**School Ends at 2:00pm - Last Day of Term**

Friday 22<sup>nd</sup> December – Friday 5<sup>th</sup> January

Christmas Holiday – **School Closed**

## **Spring Term 2024** (54 days)

Monday 8<sup>th</sup> January

Staff Training Day – **School Closed**

**Tuesday 9<sup>th</sup> January**

**School Starts**

Friday 9<sup>th</sup> February

School Ends – Last Day of Half-Term

Monday 12<sup>th</sup> February - Friday 16<sup>th</sup> February

Half-Term Holiday – **School Closed**

**Monday 19<sup>th</sup> February**

**School Starts**

Thursday 28<sup>th</sup> March

School Ends at 2:00pm - Last Day of Term

Friday 29<sup>th</sup> March – Friday 12<sup>th</sup> April

Easter Holiday – **School Closed**

## **Summer Term 2024** (67 days)

Monday 15<sup>th</sup> April

Staff Training Day – **School Closed**

**Tuesday 16<sup>th</sup> April**

**School Starts**

Monday 6<sup>th</sup> May

Bank Holiday – **School Closed**

**Friday 24<sup>th</sup> May**

School Ends – Last Day of Half-Term

Monday 27<sup>th</sup> May - Friday 31<sup>st</sup> May

Half-Term Holiday – **School Closed**

**Monday 3<sup>rd</sup> June**

**School Starts**

**Wednesday 24<sup>th</sup> July**

**School Ends at 2:00pm - Last Day of Term**