

# The Barn Croft Newsletter

*Courage, Love, Excellence*

Dear Parents and Carers,

Huge high fives to our amazing Year 6 class! They absolutely smashed their SATS this week. They'd been working so hard and it really showed. They weren't stressed at all – just calm, focused, and determined to do their very best. Breakfast Club socials definitely helped keep the mood light, and let's face it, they tackled those tricky papers with excellence! They all deserve a massive pat on the back, and that's exactly what they got with a celebratory trip to the park today. But hold on Year 6, the fun doesn't stop there! We've got loads more planned for you before the holidays. Gilwell Residential is just around the corner, the end-of-year show prep is kicking off, and transition sessions with your new schools are on the horizon. It's going to be a whirlwind of awesome! We're incredibly proud of each and every one of you!

A big round of applause too for Year 5, who had a blast learning all things science at the museum this week. Not only were they impeccably behaved (top marks!), but they also got to experience the wonders of the IMAX cinema – sounds like a pretty epic day trip! They're back in class now, buzzing with newfound scientific knowledge.

A massive thank you to the generous companies who donated those brilliant new office chairs and the comfy new sofa for reception! The foyer areas are getting a makeover, and we can't wait for you to see the finished result.

Just a reminder, the summer fair with the E17 art trail is happening on Saturday 8th June! Make sure you come along for a fun-filled day, check out the amazing Barn Croft Art Exhibition, and support the school.

Finally, bookworms get ready to rejoice! The Scholastic Book Fair arrives at Barn Croft on June 5th for a whole week. It'll be open after school each day in the front of the school, and you'll even get to see it at the summer fair. Remember, anything you buy gets match-funded for the school, so we can stock up on even more brilliant books for the children!

Keep an eye out for more details on these events and everything else coming up soon! Enjoy the lovely weather this weekend and see you all on Monday!

Miss Kelly

Acting Headteacher

## Key Diary Dates

### 22nd May

Reading for Pleasure Workshop for parents  
**2:30pm and 5:00pm**

### 24th May

Last day of Half Term

### 27th May- 31st May

Half-Term Holiday  
**School Closed**

### 3rd June

Children return to school

### 8th June

Summer Fair  
**11am-3pm**  
**11am-12pm SEND**  
**quiet time**

### 24th July

End of Term  
**Children finish at 2pm**

## Non-Uniform Day

**Friday 24<sup>th</sup> May**

**Year 5**



Certificates this week have been awarded for *P.E*

*Reception – Alva & Jules*  
*Year 1 – Rufat & Setayesh*  
*Year 2 – Harry & Rea*  
*Year 3 – Adea & Chelssy*  
*Year 4 – Isaac & Violet*  
*Year 5 – Artin & Frankie*

**Hot Choc Friday**

**Rec – Amela**

**Year 1 – Hector**

**Year 2 – Miriam**

**Year 3 – Marwah**

**Year 4 – Audrey**

**Year 5 – Josephine**

**Year 6 – Eliza**

# School Health Team Waltham Forest

Thgpcg.wf0-19SPA1@nhs.net

0300 033 6200

Drop-in sessions:

**Our Community Nursery Nurses are providing monthly drop-in sessions in Waltham Forest Primary schools, offering advice, support and signposting on a range of topics including:**

Healthy eating, height- weight management  
sleep routine, hygiene, toileting  
hearing and vision, child development

Available to all parents and pupils every month. Dates are;  
Wednesday 12th June  
Wednesday 10th July



Links for Support below

For families seeking alternative support during the school holidays, the Holiday Activity and Food Programme will continue to run for the next year. This programme offers school age children receiving benefit-related Free School Meals the opportunity to get involved in activities and holiday clubs and have a hot meal.

[Holiday activities in Waltham Forest | London Borough of Waltham Forest](#)

Ahead of a Government decision on the future of the Fund, we are actively lobbying the Government to maintain the Fund and recently launched a petition to extend it.

[The crisis isn't over: Don't axe our lifeline | 38 Degrees](#)

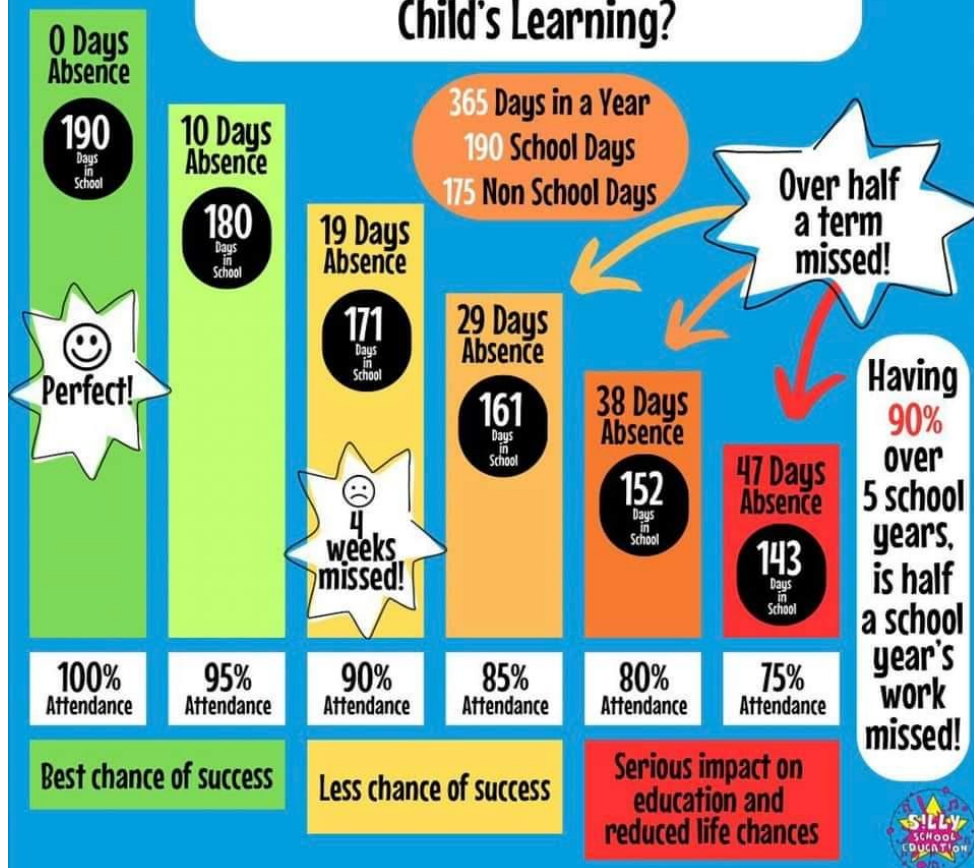
YEAR 6 TRIP TO

GILWELL PARK

4<sup>th</sup> June – 7<sup>th</sup> June

Don't forget you can start to make payments towards the Gilwell Park trip.

## How Does School Attendance Affect a Child's Learning?



## Reading For Pleasure Parent Workshops

*"Reading for pleasure is the single most important indicator of a child's future success"*

research from the OECD 2002

**When** Wednesday 22nd May at 2.30 - 3.30pm  
or at 5.00 - 6.00pm

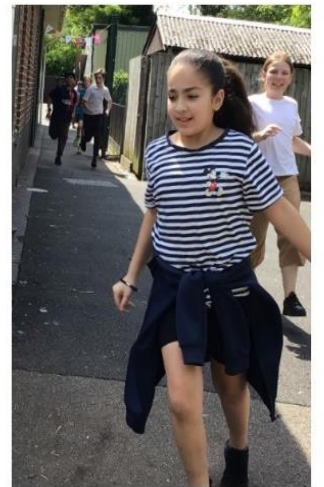
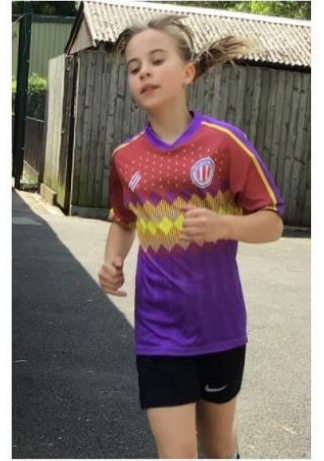
**Where** Barn Croft Primary School Hall

**Who** Parents and Carers of children in Nursery to year 6

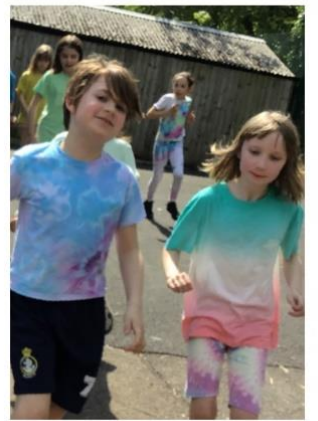
Come join us for an afternoon where we look at what reading for pleasure is; the importance of it; and how we can work together to develop a reading for pleasure culture.



# Mini Marathon at Barn Croft this week!











THE BARN CROFT  
PRIMARY SCHOOL

# SUMMER FAIR & ART EXHIBITION

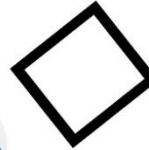
SATURDAY  
8TH JUNE 2024  
12PM - 3PM

11AM - 12PM  
SEND QUIET ZONE

ALL MONEY RAISED WILL  
GO TOWARDS THE ENRICHMENT  
OF THE PUPILS' CURRICULUM.



ENTRY £1.50 KIDS FREE



ARTS & CRAFTS  
HOT FOOD & DRINKS  
FUN & GAMES  
CAKES & BAKES  
RAFFLE  
NAILS BY HANNAH  
STALLS

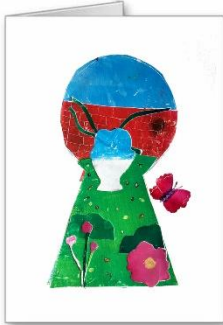
E17  
Art  
Trail  
2024

2 BRUNEL RD, LONDON, E17 8SB

Spread some joy with  
Barn Croft Primary School's  
greeting cards and poster prints.



**E17  
Art  
Trail  
2024**



*The Secret Garden*

Through a series of engaging printmaking workshops, budding Year 6 artists produced a range of collagraph prints made from recycled materials.

The students collaborated in groups, using their imagination and new-found expertise to produce one-of-a-kind artworks.

We've turned these beautiful artworks into greeting cards and A2 poster prints to sell at our E17 Art Trail Exhibition and Summer Fair.

Buy a pack of these cards or a poster (or two, or three!) to support enriching activities for Barn Croft children.



*Under the Ocean*



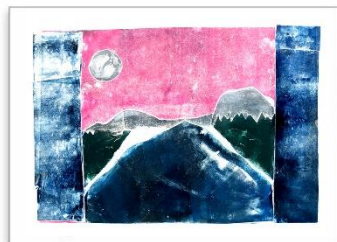
*The Enchanted Forest*

## MIXED PACK OF 6 CARDS £10 A2 POSTER PRINTS £12 EACH

Please PRE-ORDER your cards and posters at:  
<https://www.things-to-get-me.com/barn-croft-primary>  
Or scan the QR code below



This will reserve your item.  
Collection and payment will  
be at the Summer Fair  
on Saturday 8th June.



*Moonlit Mountain*



*Under a Starry Sky*



*A Stormy Day at Sea*





# SEND FOOTBALL

SIBLINGS WELCOME

funded by Barclays



SATURDAYS-TERM TIME

2-3PM

Ages: 5-25  
Venue

Wadham Lodge  
11 Kitchener Road, London E17 4JP

Admission **£3**

Booking essential via website

More info 07528 433640 [www.walthamforestparentforum.com/shop](http://www.walthamforestparentforum.com/shop)

# SEND LEGO CLUB

**FREE SESSION FOR SEND FAMILIES**  
1ST SATURDAY OF THE MONTH (EXCEPT AUGUST)  
10.30-12.30  
REFRESHMENTS PROVIDED  
**NO NEED TO BOOK, JUST POP ALONG!**  
LEYTON FAMILY HUB, 215 QUEENS ROAD, LONDON, E17 8PJ  
FOR MORE INFO CALL 07528 433640 OR 07794 298496

**WALTHAM FOREST ADULT LEARNING SERVICE**

## Help your child grow and thrive! Family Learning

Our family learning programme delivers a variety of courses, workshops and events both in person, online and at different venues in Waltham Forest - courses and workshops are free for families.

### List of upcoming courses / workshops

Course code	Course Title	Venue	Date	Time	Day
FA0350F1	Monthly art club - World Bee day clay art	Queens Road Learning Centre	18.05.2024	10:00 am - 12:00 pm	Saturday
FA0267C4	Raising Resilient and Confident children	Online	11.05.2024 - 25.06.2024	19:30 pm - 21:00 pm	Tuesday
FA0347F1	Calm Parents, Calm Children - Parenting	Leyton Family Hub	12.06.2024 - 10.07.2024	10:00 am - 12:00 pm	Wednesday
FA0243C4	Summer Cards workshop	North Chingford Library	22.06.2024	10:00 am - 12:00 pm	Saturday
FA0351F1	Monthly art club Great Big Green Week	Queens Road Learning Centre	22.06.2024	10:00 am - 12:00 pm	Saturday

If you have any questions regarding family learning activities, please contact  
- [cherie.cowan-smith@walthamforest.gov.uk](mailto:cherie.cowan-smith@walthamforest.gov.uk) Curriculum Manager Family Learning

Enrol now through our website - [www.lbwfadultlearning.co.uk](http://www.lbwfadultlearning.co.uk)  
For more information email [adult.learning@walthamforest.gov.uk](mailto:adult.learning@walthamforest.gov.uk)

### Family Learning Courses and workshops 2024/25

Courses and taster workshops available are:

**Keeping up with the Children in Literacy or Numeracy**  
Keeping up with the Children is an introduction to either the literacy or the numeracy curriculum at KS1. Parents and carers gain an understanding of some strategies used in school and also make and use activities to support their child's learning at home.

**Everyday English for Parents (ESOL)**  
This course is for parents whose first language is not English. It is a parent/carer only course that improves the parents' level of English so that they can communicate more effectively with the school and support their child's learning. Improved language skills of the parent/carer usually has a positive impact on school attendance.

**Everyday maths** As part of the Multiply strategy to support adults with their numeracy skills, we deliver short courses around budgeting, saving money, help your child to budget and having fun with maths in everyday life.

**Parenting**  
Calm Parent, Calm Children course includes promoting positive behaviour in children through praise, promoting calm behaviour, constructive reflection, setting and keeping boundaries. The course always receives very positive feedback from the parents and schools have reported that they have seen positive changes in children in school.

**Creative courses**  
These courses are a great way to support parents' health and well being and a taste of some of the longer courses that we deliver at the ALS. Courses include, embroidery, knitting, printing and art courses.

**Digital safety and ICT for parents/carers**  
The E- safety course looks at internet safety and how parents can monitor their child's online activity. The ICT course will support parents who would like to improve their digital skills using their mobile phones, laptops and tablets. These courses require the use of tablets or laptops that adults can use.

[www.walthamforest.gov.uk/adult-learning](http://www.walthamforest.gov.uk/adult-learning)  
[adult.learning@walthamforest.gov.uk](mailto:adult.learning@walthamforest.gov.uk)



# Barn Croft Primary School Calendar 2023-2024

## **Autumn Term 2023** (74 days)

Monday 4<sup>th</sup> September Staff Training Day – **School Closed**  
Tuesday 5<sup>th</sup> September Staff Training Day – **School Closed**

**Wednesday 6<sup>th</sup> September School Starts**  
Friday 20<sup>th</sup> October School Ends – Last Day of Half-Term

Monday 23<sup>rd</sup> October - Friday 27<sup>th</sup> October Half-Term Holiday – **School Closed**

**Monday 30<sup>th</sup> October School Starts**

Monday 13<sup>th</sup> November Staff Training Day – **School Closed**

**Thursday 21<sup>st</sup> December School Ends at 2:00pm - Last Day of Term**

Friday 22<sup>nd</sup> December – Friday 5<sup>th</sup> January Christmas Holiday – **School Closed**

## **Spring Term 2024** (54 days)

Monday 8<sup>th</sup> January Staff Training Day – **School Closed**

**Tuesday 9<sup>th</sup> January School Starts**  
Friday 9<sup>th</sup> February School Ends – Last Day of Half-Term

Monday 12<sup>th</sup> February - Friday 16<sup>th</sup> February Half-Term Holiday – **School Closed**

**Monday 19<sup>th</sup> February School Starts**  
Thursday 28<sup>th</sup> March School Ends at 2:00pm - Last Day of Term

Friday 29<sup>th</sup> March – Friday 12<sup>th</sup> April Easter Holiday – **School Closed**

## **Summer Term 2024** (67 days)

Monday 15<sup>th</sup> April Staff Training Day – **School Closed**

**Tuesday 16<sup>th</sup> April School Starts**

Monday 6<sup>th</sup> May Bank Holiday – **School Closed**

**Friday 24<sup>th</sup> May School Ends – Last Day of Half-Term**

Monday 27<sup>th</sup> May - Friday 31<sup>st</sup> May Half-Term Holiday – **School Closed**

**Monday 3<sup>rd</sup> June School Starts**  
**Wednesday 24<sup>th</sup> July School Ends at 2:00pm - Last Day of Term**



# Barn Croft Primary School Calendar 2024-2025

## **Autumn Term 2024** (74 days)

Monday 2<sup>nd</sup> September  
Tuesday 3<sup>rd</sup> September

Staff Training Day – **School Closed**  
Staff Training Day – **School Closed**

### **Wednesday 4<sup>th</sup> September**

**School Starts**

Friday 18<sup>th</sup> October

School Ends – Last Day of Half-Term

Monday 21<sup>st</sup> October - Friday 25<sup>th</sup> October

Half-Term Holiday – **School Closed**

Monday 28<sup>th</sup> October

Staff Training Day – **School Closed**

### **Tuesday 29<sup>th</sup> October**

**School Starts**

Thursday 19<sup>th</sup> December

School Ends at 2:00pm - Last Day of Term

Friday 20<sup>th</sup> December – Friday 3<sup>rd</sup> January

Christmas Holiday – **School Closed**

## **Spring Term 2025** (60 days)

Monday 6<sup>th</sup> January

Staff Training Day – **School Closed**

### **Tuesday 7<sup>th</sup> January**

**School Starts**

Friday 14<sup>th</sup> February

School Ends – Last Day of Half-Term

Monday 17<sup>th</sup> February - Friday 21<sup>st</sup> February

Half-Term Holiday – **School Closed**

### **Monday 24<sup>th</sup> February**

**School Starts**

Friday 4<sup>th</sup> April

School Ends at 2:00pm - Last Day of Term

Monday 7<sup>th</sup> April – Monday 21<sup>st</sup> April

Easter Holiday – **School Closed**

## **Summer Term 2025** (61 days)

### **Tuesday 22<sup>nd</sup> April**

**School Starts**

Monday 5<sup>th</sup> May

Bank Holiday – **School Closed**

Friday 23<sup>rd</sup> May

School Ends – Last Day of Half-Term

Monday 26<sup>th</sup> May - Friday 30<sup>th</sup> May

Half-Term Holiday – **School Closed**

Monday 2<sup>nd</sup> June

Staff Training Day – **School Closed**

### **Tuesday 3<sup>rd</sup> June**

**School Starts**

Wednesday 23<sup>rd</sup> July

School Ends at 2:00pm - Last Day of Term