

# The Barn Croft Newsletter

*Courage, Love, Excellence*

Dear Parents and Carers,

I'd like to extend a very warm welcome to our new Reception children and their families! It's been wonderful to see how quickly the children have settled into their new routines and begun exploring all that school life has to offer. They've transitioned beautifully and are already showing so much curiosity and enthusiasm for learning.

Across the school, all our children have made a fantastic start to the new school year. Their focus and dedication to their learning is evident, and we are so proud of them. This term, we have introduced an exciting new writing curriculum, which places a greater emphasis on purpose, audience, and redrafting work for publishing. The children have embraced these new challenges brilliantly, and I can't wait to see their creative writing journeys unfold.

Our phonics lessons have also resumed, and the children have quickly got back into the swing of things. Spelling lessons will begin the week commencing Monday 23rd September, so keep an eye out for those! Please remember to continue reading daily with your child—both with their phonics books and by sharing high-quality stories together for sheer reading enjoyment. Your support at home really makes a difference!

Lastly, a reminder about our **Meet the Teacher Evening on Wednesday 18th September at 3:45pm**. Please come to the office to sign in. This will be a great opportunity to connect, ask questions, and learn more about what's in store for the year ahead.

Thank you for your continued support, and here's to a successful and joyful school year!

Miss Kelly

**Acting Headteacher**

## Key Diary Dates

**18th September**  
**Meet the Teacher Event**  
3:45pm

**19th September**  
**Flu Vaccinations for Rec-Year 6**

**21st October – 25th October**  
Half Term  
**School Closed**

**28th October**  
Staff Training Day  
**School Closed**

**29th October**  
Children return to School



Certificates this week have been awarded for *Great start to the Term*

Year 1 – Edison & Zeriah

Year 2 – Logan & Suellen

Year 3 – David & Masiah

Year 4 – Winnie & Farley

Year 5 – Anelka & Loni

Year 6 – Annie & Schane-Jae

**Hot Choc Friday**

Year 1 – Edie

Year 2 – Rickie

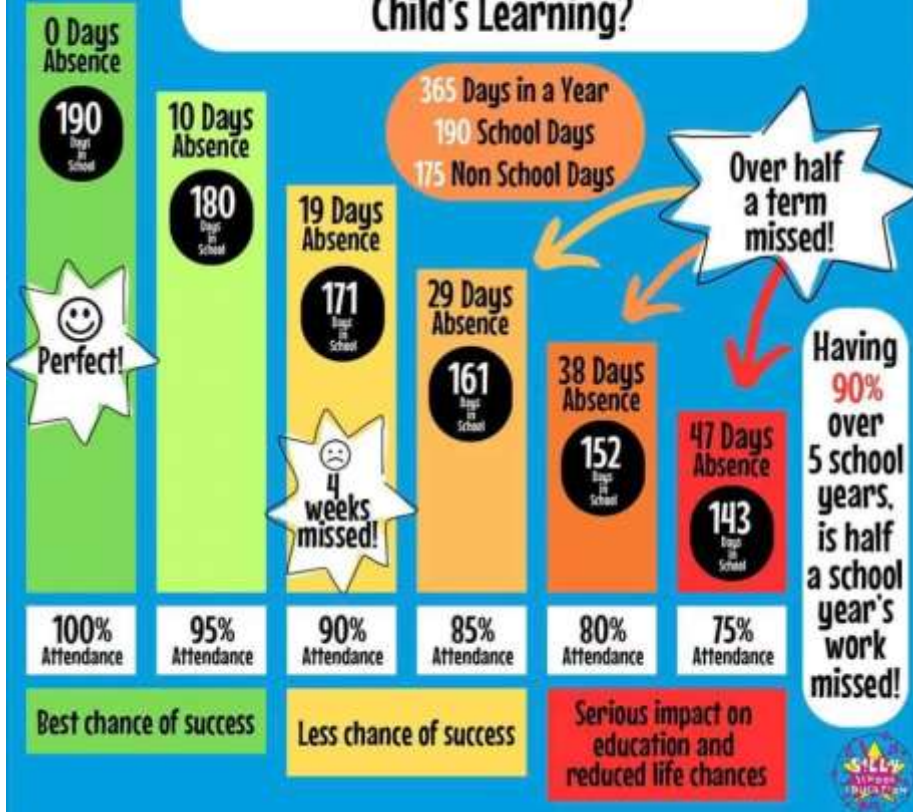
Year 3 – Chloe

Year 4 – Cora

Year 5 – Maryam

Year 6 – Clea

## How Does School Attendance Affect a Child's Learning?



## Afterschool Clubs

There are still some spaces available on the Afterschool Clubs for Years 1 -6. Please have a look on parentmail.

## LABELLING UNIFORM

Please remember to label your child's school uniform clearly. If your child's uniform is misplaced, it is difficult to find the owner if there is no name on the label!

## REMINDERS FOR PARENTS FOR THE NEW TERM!

### Asthma Pumps / EPI PEN

If your child is asthmatic or has severe allergies that require an epi-pen, then please ensure that your child has a labelled asthma pump/epi pen with them in school at all times, **and that it is in date**. Asthma pumps and epi pens are the **only** medicine which should be kept in the classroom with the child for prompt access.

### Free School Meals Trawl

Even if your child brings a packed lunch or receives the Universal Free School Meal and you think you may be entitled to Free School Meals then please do apply to the Borough as the schools funding can greatly benefit from this!

### Mobile Phones

Pupils bringing mobile phones to school must ensure they are put away before they come through the school gate and **must** be handed to the office before registration for safe keeping during the school day.

### Appointments

Parents and carers are asked most earnestly **not** to arrange these during school sessions, except in cases of urgency, so that considerable interference with school work is avoided. Please do not keep children out of school for the whole day unless absolutely necessary.

Thank you!



WALTHAM FOREST

# COMMUNITY DAY



Come together to celebrate your local community.

Join us for performances, arts and crafts workshop, face painting, inflatables, live music and more - for free!

No ticket required, just come along.

**SUNDAY**  
**15 SEPTEMBER | 12.30PM TO 5 PM**

FELLOWSHIP SQUARE, WALTHAMSTOW, E17 4JF



SUPPORTED BY  
MAYOR OF LONDON



## WORKSHOPS

- Cultural experiences from around the world
- Inclusive arts and crafts
- Still life drawing
- Calligraphy
- Poetry and language sessions
- Nature inspired creativity
- African drumming and dance
- Gentle Tai Chi
- Virtual reality experience
- East Asian dancing
- Sewing and mending workshop - bring along clothes that need fixed!
- Dance and storytelling



## PERFORMANCES



Albanian catwalk, singing & dance  
Tinku, South American dance  
Afro-Caribbean Intergen Mix Tape  
Youth dance performances  
Pop up dance parties



**PLUS FACE PAINTING, BOUNCY CASTLE, CHAIR MASSAGE AND GIANT GARDEN GAMES!**



## Help your child grow and thrive! Family Learning



Our family learning programme delivers a variety of courses, workshops and events both in person, online and at different venues in Waltham forest - courses and workshops are free for families.

### List of upcoming courses / workshops

Course Code	Course Title	Venue	Date	Time	Day
FAQ298CA	Calm Parents Calm children Course	Queens Road Family Hub	18.09.2024 - 18.10.2024	10:00 am - 12:00pm	Wednesday
FAQ198C3	Keeping up with the children English	Queens Road Learning Centre	24.09.2024 - 15.10.2024	10:00 am - 12:00pm	Tuesday
FAQ298C5	Fantastic Phonics Workshop	Queens Road Learning Centre	23.09.2024	10:00 am - 12:00pm	Wednesday
FAQ298F1	Paper Mosaic art	North Chingford Library	28.09.2024	10:00 am - 12:00pm	Saturday
FAQ298C5	Keeping your child safe online	Queens Road Learning Centre	01.10.2024	10:00 am - 12:00pm	Tuesday
	Savvy Shopping - Tips to save money on your weekly shopping	Queens Road Learning Centre	New Course - Get in touch if interested		

Interested and wish to know more, email Cherie Cowan-Smith - [Cherie.Cowan-Smith@walthamforest.gov.uk](mailto:Cherie.Cowan-Smith@walthamforest.gov.uk)

Enrol now through our website - [www.lbwfadultlearning.co.uk](http://www.lbwfadultlearning.co.uk)  
For more information email [adult.learning@walthamforest.gov.uk](mailto:adult.learning@walthamforest.gov.uk)



## Looking for healthy after-school snack ideas?



Beezee FAMILIES

### We've got you covered!

Our free, Beezee Families healthy lifestyle programme can help your family make healthy habits.



### Tuck into these healthy snacks:

- Two wholegrain crackers and tzatziki
- Rice cakes or corn cakes
- Two crackers with a spread of low-fat cream cheese and cherry tomatoes
- Plain or Greek yoghurt and fruit
- 150ml homemade fruit smoothie
- Vegetable sticks (carrot/pepper/cucumber) with hummus
- Fruit kebabs
- Wholegrain toast with a thin layer of peanut butter
- Breadsticks
- Handful of dried fruit
- Dried apple slices (slice into 1/4 inch circles, bake at 200 degrees until dry)
- Handful of homemade popcorn
- Homemade fruit ice lollies
- Apple slices with peanut butter.



### Want more healthy lifestyle support?

Check out our website to find out how we can help your family!

Scan here

Click the link



WALTHAM FOREST



# Barn Croft Primary School Calendar 2024-2025

## **Autumn Term 2024** (74 days)

Monday 2<sup>nd</sup> September                      Staff Training Day – **School Closed**  
Tuesday 3<sup>rd</sup> September                      Staff Training Day – **School Closed**

**Wednesday 4<sup>th</sup> September**                      **School Starts**  
Friday 18<sup>th</sup> October                      School Ends – Last Day of Half-Term

Monday 21<sup>st</sup> October - Friday 25<sup>th</sup> October                      Half-Term Holiday – **School Closed**

Monday 28<sup>th</sup> October                      Staff Training Day – **School Closed**

**Tuesday 29<sup>th</sup> October**                      **School Starts**

Thursday 19<sup>th</sup> December                      School Ends at 2:00pm - Last Day of Term

Friday 20<sup>th</sup> December – Friday 3<sup>rd</sup> January                      Christmas Holiday – **School Closed**

## **Spring Term 2025** (60 days)

Monday 6<sup>th</sup> January                      Staff Training Day – **School Closed**

**Tuesday 7<sup>th</sup> January**                      **School Starts**  
Friday 14<sup>th</sup> February                      School Ends – Last Day of Half-Term

Monday 17<sup>th</sup> February - Friday 21<sup>st</sup> February                      Half-Term Holiday – **School Closed**

**Monday 24<sup>th</sup> February**                      **School Starts**  
Friday 4<sup>th</sup> April                      School Ends at 2:00pm - Last Day of Term

Monday 7<sup>th</sup> April – Monday 21<sup>st</sup> April                      Easter Holiday – **School Closed**

## **Summer Term 2025** (61 days)

**Tuesday 22<sup>nd</sup> April**                      **School Starts**

Monday 5<sup>th</sup> May                      Bank Holiday – **School Closed**

Friday 23<sup>rd</sup> May                      School Ends – Last Day of Half-Term

Monday 26<sup>th</sup> May - Friday 30<sup>th</sup> May                      Half-Term Holiday – **School Closed**

Monday 2<sup>nd</sup> June                      Staff Training Day – **School Closed**

**Tuesday 3<sup>rd</sup> June**                      **School Starts**

**Wednesday 23<sup>rd</sup> July**                      School Ends at 2:00pm - Last Day of Term