

The Barn Croft Newsletter

Courage, Love, Excellence

Dear Parents and Carers,

This week, both Year 5 and Year 6 had the wonderful opportunity to take part in trips linked directly to their learning. Year 5 enjoyed an informative day at the British Museum, where they attended a presentation about the fascinating people of Benin. Meanwhile, Year 6 visited the Museum of London, where they participated in a powerful workshop called The Blitz through Connie's Eyes. Both classes had an incredible time and, as always, demonstrated exemplary behaviour—a real credit to themselves and our school.

Looking ahead, Year 4 are gearing up for their own adventure to the British Museum to explore the Roman Rooms. Year 2 are excited for their visit to the Pumphouse Museum, while Year 1 will be heading to the Young V&A. Reception will also be venturing out on a local walk soon, where they'll gain valuable experience and practice essential road safety skills. Let's not forget Year 3, who had a fantastic time last week at the Natural History Museum, trying their hand at pond dipping!

There's a real buzz about the enriched learning opportunities these trips are providing. Not only are the children deepening their understanding of key topics, but they're also developing important life and safety skills when out and about. A huge thank you to our dedicated staff for their time and effort in planning and leading these trips, and of course, to the parent helpers whose support makes these experiences possible.

On the learning front, spelling groups have restarted this week, and we're excited to announce that final assessments and training are underway with our speech and language therapist. Specialist interventions will begin soon in the nurture room, replacing class-based SEND interventions. This means that class teams can now focus on academic interventions to support the progress and attainment of all pupils.

Next week on Thursday 10th October, we will be marking World Mental Health Day, supporting 'YoungMinds' who help young people's mental health. The children will have an assembly led by Helen and some wellbeing activities in class. The children can wear something yellow to show their support on Thursday.

Tonight, we have the much-anticipated Friends of Barn Croft's 'Welcome Back International Party!' The event is free for all to attend, and we'd love to see you there as we celebrate our wonderful school community. If you're interested in supporting future events and fundraising efforts, do come along to the FOBC AGM on Monday 14th October at 6.30pm in the school hall.

Finally, a couple of reminders:

- The weather is turning more autumnal, so please ensure children have a coat in school every day so they can enjoy outdoor play in all conditions.
- For safety reasons, scooters, bikes, and trikes are not to be ridden on school premises—this applies to both children and adults.

Thank you for your continued support, and we look forward to seeing you at tonight's event!

Miss Kelly
Acting Headteacher

Key Diary Dates

21st October – 25th October
Half Term
School Closed

28th October
Staff Training Day
School Closed

29th October
Children return to School

19th December
School ends at 2pm

20th Dec – 3rd Jan
Christmas Holiday
School Closed

6th January
Staff Training Day
School Closed

7th January
Children return to School

Dates for your Diary - Class Trips

Year 1 – 15th October, Young V and A

Year 2 – 8th October, Walthamstow Pumphouse Museum

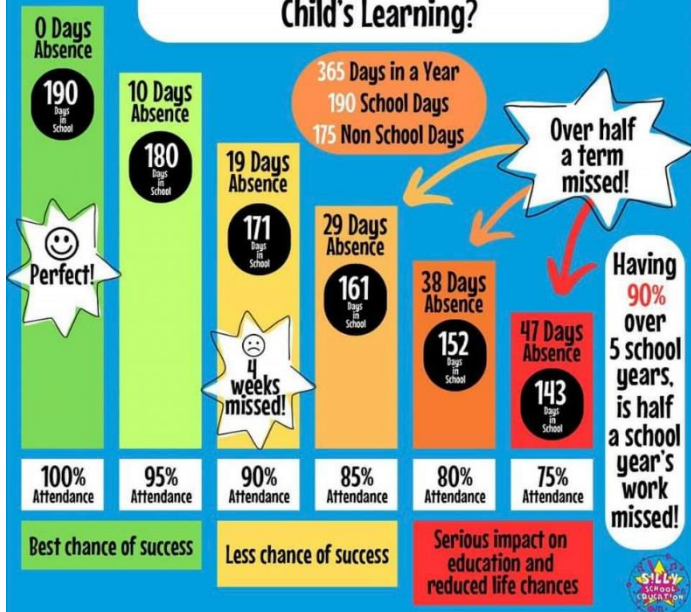
Year 3 – ~~30th September, Natural History Museum~~

Year 4 – 9th October, British Museum

Year 5 – ~~4th October, British Museum~~

Year 6 – ~~1st October, Museum of London~~

How Does School Attendance Affect a Child's Learning?



LABELLING UNIFORM

Please remember to label your child's school uniform clearly. If your child's uniform is misplaced, it is difficult to find the owner if there is no name on the label!

REMINDERS FOR PARENTS FOR THE NEW TERM!

Asthma Pumps / EPI PEN

If your child is asthmatic or has severe allergies that require an epi-pen, then please ensure that your child has a labelled asthma pump/epi pen with them in school at all times, **and that it is in date**. Asthma pumps and epi pens are the **only** medicine which should be kept in the classroom with the child for prompt access.

Free School Meals Trawl

Even if your child brings a packed lunch or receives the Universal Free School Meal and you think you may be entitled to Free School Meals then please do apply to the Borough as the schools funding can greatly benefit from this!

Mobile Phones

Pupils bringing mobile phones to school must ensure they are put away before they come through the school gate and **must** be handed to the office before registration for safe keeping during the school day.

Appointments

Parents and carers are asked most earnestly **not** to arrange these during school sessions, except in cases of urgency, so that considerable interference with school work is avoided. Please do not keep children out of school for the whole day unless absolutely necessary.

Thank you!



Waltham Forest Mental Health Support Team Webinar Dates 2024

Waltham Forest Mental Health Team present to you webinar dates for 2024. These webinars cover a range of topics around mental health and wellbeing. They are accessible to all residents of Waltham Forest.

ALL webinars run from 4:30-5:30pm.

[Register HERE](#)



OCTOBER 2024



Wednesday 02nd October 2024: What is Mental Health (*Primary School Parents/Carers*)

Wednesday 16th October 2024: What is Mental Health (*Secondary School Parents/Carers*)

NOVEMBER 2024



Wednesday 6th November 2024: What is Mental Health? (*ALL Support Staff and Teachers*)

Thursday 14th November 2024: School attendance and Emotional Wellbeing (*ALL parents/Carers*)

Thursday 28th November 2024: School attendance and Emotional Wellbeing (*ALL Support Staff and Teachers*)

DECEMBER 2024



Thursday 5th December 2024: Managing Anxiety (*Young People*)

Thursday 12th December 2024: Managing Low Mood (*Young People*)



WALTHAM
FOREST
ADULT
LEARNING
SERVICE

Help your child grow and thrive!
Family Learning



Our family learning programme delivers a variety of courses, workshops and events both in person, online and at different venues in Waltham Forest - courses and workshops are free for families.

List of upcoming courses / workshops

Course Code	Course Title	Venue	Date	Time	Day
FA0258C4	Calm Parents Calm children Course	Queens Road Family Hub	18.09.2024 - 16.10.2024	10:00 am - 12:00pm	Wednesday
FA0168C3	Keeping Up with the children English	Queens Road Learning Centre	24.09.2024 - 15.10.2024	10:00 am - 12:00pm	Tuesday
FA0285C5	Fantastic Phonics Workshop	Queens Road Learning Centre	25.09.2024	10:00 am - 12:00pm	Wednesday
FA0296F1	Paper Mosaic art	North Chingford Library	28.09.2024	10:00 am - 12:00pm	Saturday
FA0289C5	Keeping your child safe online	Queens Road Learning Centre	01:10:2024	10:00 am - 12:00pm	Tuesday
	Savvy Shopping - Tips to save money on your weekly shopping	Queens Road Learning Centre			New Course - Get in touch if interested

Interested and wish to know more, email Cherie Cowan-Smith - Cherie.Cowan-Smith@walthamforest.gov.uk

Enrol now through our website - www.lbwfadulthoodlearning.co.uk
For more information email adult.learning@walthamforest.gov.uk





Barn Croft Primary School Calendar 2024-2025

Autumn Term 2024 (74 days)

Monday 2nd September
Tuesday 3rd September

Staff Training Day – **School Closed**
Staff Training Day – **School Closed**

Wednesday 4th September

School Starts

Friday 18th October

School Ends – Last Day of Half-Term

Monday 21st October - Friday 25th October

Half-Term Holiday – **School Closed**

Monday 28th October

Staff Training Day – **School Closed**

Tuesday 29th October

School Starts

Thursday 19th December

School Ends at 2:00pm - Last Day of Term

Friday 20th December – Friday 3rd January

Christmas Holiday – **School Closed**

Spring Term 2025 (60 days)

Monday 6th January

Staff Training Day – **School Closed**

Tuesday 7th January

School Starts

Friday 14th February

School Ends – Last Day of Half-Term

Monday 17th February - Friday 21st February

Half-Term Holiday – **School Closed**

Monday 24th February

School Starts

Friday 4th April

School Ends at 2:00pm - Last Day of Term

Monday 7th April – Monday 21st April

Easter Holiday – **School Closed**

Summer Term 2025 (61 days)

Tuesday 22nd April

School Starts

Monday 5th May

Bank Holiday – **School Closed**

Friday 23rd May

School Ends – Last Day of Half-Term

Monday 26th May - Friday 30th May

Half-Term Holiday – **School Closed**

Monday 2nd June

Staff Training Day – **School Closed**

Tuesday 3rd June

School Starts

Wednesday 23rd July

School Ends at 2:00pm - Last Day of Term