

The Barn Croft Newsletter

Courage, Love, Excellence

Dear Parents and Carers,

As autumn settles in, we've certainly been feeling the change in weather, with rainy days becoming the norm. While the puddles are growing outside, the energy and excitement inside the school remain high, and it's wonderful to see the incredible learning happening in every classroom.

In Early Years, the children have been diving into the world of *Jack and the Beanstalk*, thoroughly enjoying acting out the story in our puppet show area. Their creativity has truly shone as they bring the characters to life. Year 1 has been busy creating their own book about missing puffins, inspired by *Puffin Peter*. Their work has been full of imagination as they craft beautiful stories and illustrations. In Year 2, the children have been learning to write instructions, focusing on how to be a good friend. They've been using ideas from the book *How to Look After a Ghost* to guide their writing, and it's been heartwarming to see their thoughtful responses. Year 3 has been exploring art through gestural drawings, taking inspiration from the artist Edgar Degas. The children's sketches have captured movement and expression wonderfully, and they've really enjoyed experimenting with this technique. Over in Year 4, the children have been conducting a fascinating science experiment, testing the effects different liquids have on teeth by using eggs. Each day, the whole school has been intrigued by the changing results! Year 5 has been hard at work on their non-chronological reports. They've been creating an exciting *Big Book of Monsters*, which will be finished soon and shared with families. We can't wait to see the final product! Although Year 6 has been focused on assessments this week, they've still found time to delve into their History topic, learning about the Battle of Versailles. Their enthusiasm for the subject has been evident, and it's great to see them balancing their studies so well.

This week, Ms. Tierney led a lovely assembly on friendship, reading *The Squirrels Who Squabbled* and discussing the importance of being kind and supportive to one another—a message that resonates strongly throughout our school community.

Next week, we have Year 3, Year 6 and Year 5 going out on trips, please look out for these dates below on the next page. We also have our Reception 2025 Tours starting from next week **Wednesday 2nd October at 9:30am** so if you know of any families who are prospective parents of a child who will be starting School in September 2025 and would like to book a place to have a look around the school, then please ask them to contact the school office and we will book them in!

As we move further into the autumn term, I look forward to all the exciting learning and experiences that lie ahead!

Miss Kelly

Acting Headteacher

Key Diary Dates

21st October – 25th October
Half Term
School Closed

28th October
Staff Training Day
School Closed

29th October
Children return to School

19th December
School ends at 2pm

20th Dec – 3rd Jan
Christmas Holiday
School Closed

6th January
Staff Training Day
School Closed

7th January
Children return to School

Non Uniform Day

Thursday 3rd October
Year 1

Friday 4th October
Year 2
&
Year 4



Certificates this week have been awarded for *Reading*

Year 1 – Alva & Isaiah
Year 2 – Kai & Paz
Year 3 – Idris & Niamh
Year 4 – Fionn & Lily
Year 5 – Audrey & Isaac
Year 6 – Frankie & Josephine

Hot Choc Friday

Year 1 – Zeriah
Year 2 – Elisa
Year 3 – Robin
Year 4 – Adea
Year 5 – Lily-Hazel
Year 6 – Adrianna

Dates for your Diary - Class Trips

Year 1 – 15th October, Young V and A

Year 2 – 8th October, Walthamstow Pumphouse Museum

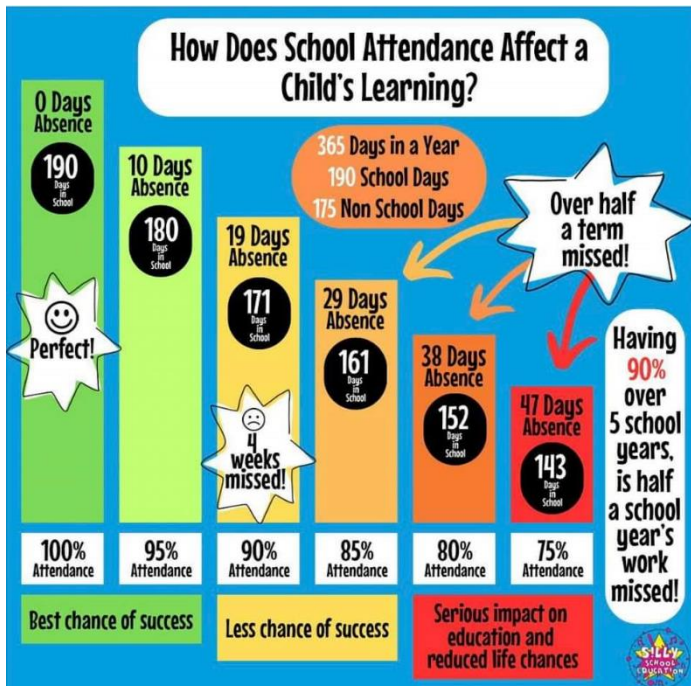
Year 3 – 30th September, Natural History Museum

Year 4 – 9th October, British Museum

Year 5 – 4th October, British Museum

Year 6 – 1st October, Museum of London

How Does School Attendance Affect a Child's Learning?



LABELLING UNIFORM

Please remember to label your child's school uniform clearly. If your child's uniform is misplaced, it is difficult to find the owner if there is no name on the label!

REMINDERS FOR PARENTS FOR THE NEW TERM!

Asthma Pumps / EPI PEN

If your child is asthmatic or has severe allergies that require an epi-pen, then please ensure that your child has a labelled asthma pump/epi pen with them in school at all times, **and that it is in date**. Asthma pumps and epi pens are the **only** medicine which should be kept in the classroom with the child for prompt access.

Free School Meals Trawl

Even if your child brings a packed lunch or receives the Universal Free School Meal and you think you may be entitled to Free School Meals then please do apply to the Borough as the schools funding can greatly benefit from this!

Mobile Phones

Pupils bringing mobile phones to school must ensure they are put away before they come through the school gate and **must** be handed to the office before registration for safe keeping during the school day.

Appointments

Parents and carers are asked most earnestly **not** to arrange these during school sessions, except in cases of urgency, so that considerable interference with school work is avoided. Please do not keep children out of school for the whole day unless absolutely necessary.

Thank you!



Waltham Forest Mental Health Support Team Webinar Dates 2024

Waltham Forest Mental Health Team present to you webinar dates for 2024. These webinars cover a range of topics around mental health and wellbeing. They are accessible to all residents of Waltham Forest.

ALL webinars run from 4:30-5:30pm.

[Register HERE](#)



OCTOBER 2024



Wednesday 02nd October 2024: What is Mental Health (*Primary School Parents/Carers*)

Wednesday 16th October 2024: What is Mental Health (*Secondary School Parents/Carers*)

NOVEMBER 2024



Wednesday 6th November 2024: What is Mental Health? (*ALL Support Staff and Teachers*)

Thursday 14th November 2024: School attendance and Emotional Wellbeing (*ALL parents/Carers*)

Thursday 28th November 2024: School attendance and Emotional Wellbeing (*ALL Support Staff and Teachers*)

DECEMBER 2024



Thursday 5th December 2024: Managing Anxiety (*Young People*)

Thursday 12th December 2024: Managing Low Mood (*Young People*)



WALTHAM
FOREST
ADULT
LEARNING
SERVICE

Help your child grow and thrive!
Family Learning



Our family learning programme delivers a variety of courses, workshops and events both in person, online and at different venues in Waltham Forest - courses and workshops are free for families.

List of upcoming courses / workshops

Course Code	Course Title	Venue	Date	Time	Day
FA0258C4	Calm Parents Calm children Course	Queens Road Family Hub	18.09.2024 - 16.10.2024	10:00 am - 12:00pm	Wednesday
FA0168C3	Keeping Up with the children English	Queens Road Learning Centre	24.09.2024 - 15.10.2024	10:00 am - 12:00pm	Tuesday
FA0285C5	Fantastic Phonics Workshop	Queens Road Learning Centre	25.09.2024	10:00 am - 12:00pm	Wednesday
FA0296F1	Paper Mosaic art	North Chingford Library	28.09.2024	10:00 am - 12:00pm	Saturday
FA0289C5	Keeping your child safe online	Queens Road Learning Centre	01:10:2024	10:00 am - 12:00pm	Tuesday
	Savvy Shopping - Tips to save money on your weekly shopping	Queens Road Learning Centre			New Course - Get in touch if interested

Interested and wish to know more, email Cherie Cowan-Smith - Cherie.Cowan-Smith@walthamforest.gov.uk

Enrol now through our website - www.lbwfadultlearning.co.uk
For more information email adult.learning@walthamforest.gov.uk





Picking Up The Pieces

A three week group programme for mothers and female carers with children affected by domestic abuse.

solace therapeutic services

solacewomensaid.org

The Picking Up The Pieces Programme aims to inform and empower women about domestic abuse, being confident in their parenting and understanding the impacts of domestic abuse on their children in order to provide them with the information to keep both themselves and their children safe from further or future abuse.

The programme will also support women to increase their understanding of law and guidance as it relates to children in the UK, thus enabling them to make informed decisions about their children's needs.

We will promote and encourage mothers/female carers to work with children's social care and other local authority services safeguarding processes. The programme will help you improve your relationship with your children and understand the structures and support in place from agencies like social services in a positive way.

The programme covers:

- What is domestic abuse?
- Resilience
- Impacts on children
- Attachment and providing security
- Domestic abuse and impact on parenting
- Children's Social Care involvement
- Confident parenting



0300 330 5479
Monday - Friday 10am-2pm



wftherapeuticmarketplace@solacewomensaid.org



solacewomensaid.org

Solace is an independent charity which supports women and children in London to build safe lives and strong futures, free from domestic and sexual violence and abuse.

Solace Women's Aid is a charity registered in England and Wales. Charity Number 1082450. Company Number 03376716

solace



Barn Croft Primary School Calendar 2024-2025

Autumn Term 2024 (74 days)

Monday 2nd September
Tuesday 3rd September

Staff Training Day – **School Closed**
Staff Training Day – **School Closed**

Wednesday 4th September

School Starts

Friday 18th October

School Ends – Last Day of Half-Term

Monday 21st October - Friday 25th October

Half-Term Holiday – **School Closed**

Monday 28th October

Staff Training Day – **School Closed**

Tuesday 29th October

School Starts

Thursday 19th December

School Ends at 2:00pm - Last Day of Term

Friday 20th December – Friday 3rd January

Christmas Holiday – **School Closed**

Spring Term 2025 (60 days)

Monday 6th January

Staff Training Day – **School Closed**

Tuesday 7th January

School Starts

Friday 14th February

School Ends – Last Day of Half-Term

Monday 17th February - Friday 21st February

Half-Term Holiday – **School Closed**

Monday 24th February

School Starts

Friday 4th April

School Ends at 2:00pm - Last Day of Term

Monday 7th April – Monday 21st April

Easter Holiday – **School Closed**

Summer Term 2025 (61 days)

Tuesday 22nd April

School Starts

Monday 5th May

Bank Holiday – **School Closed**

Friday 23rd May

School Ends – Last Day of Half-Term

Monday 26th May - Friday 30th May

Half-Term Holiday – **School Closed**

Monday 2nd June

Staff Training Day – **School Closed**

Tuesday 3rd June

School Starts

Wednesday 23rd July

School Ends at 2:00pm - Last Day of Term