

The Barn Croft Newsletter

Courage, Love, Excellence

Dear Parents and Carers,

A huge thank you to all the parents who attended our Year 1 Phonics Workshop this week. It was fantastic to see so many of you engaging with the session, and we truly hope you found it helpful. A special thank you to our dedicated staff for their hard work in preparing and delivering such an informative workshop. Your involvement makes a world of difference!

A reminder that Parents' Evenings will be held next week on **Tuesday and Thursday**. If you haven't yet booked your appointment, please do so via ParentMail to secure your slot. This is a wonderful opportunity to see samples of your child's work, hear how they've settled into their new class, discuss their initial progress, and receive helpful targets to support their learning at home.

This week, the children had their individual and sibling photos taken. You will soon receive email links to view and purchase these adorable snapshots. The children looked so smart in their uniforms, and their smiles truly lit up the room!

As part of our ongoing commitment to SEND and neurodiversity, we are pleased to host an informal coffee meeting in collaboration with the Waltham Forest SEND Parent Forum on **Monday 11th November at 2.30pm**. This event is specifically for parents of pupils with SEND needs. If you'd like to attend, please let the office know so we can plan accordingly (and ensure we have enough biscuits to go around!).

For safety reasons, we kindly remind all parents that **long hair must be tied up**. Starting next week, we will be instructing children to tie up their hair if they arrive without it already secured. Thank you for your cooperation in keeping everyone safe.

Mark your calendars for our upcoming fundraising events! On **Friday 29th November**, Year 2 will be hosting a bake sale after school. And don't miss our **Winter Fair on Saturday 7th December**—a festive event filled with fun activities. Both cash and card payments will be accepted, so please come prepared to support our school community!

Thank you, as always, for your continued support. We look forward to seeing you at these events!

Miss Kelly
Acting Headteacher

Key Diary Dates

11th November
SEND Parent Forum

12th November
Parents Evening
3:40-7:00pm in Hall

14th November
Parents Evening
3:40-5:40pm in Hall

29th November
Year 2 Bake sale

7th December
Winter Fair
11-12am SEND time
12-3pm

10th December
KS1 Christmas Show
9:30-10:30am in Hall

11th December
EYFS Christmas Show
9:30-10:00am in Hall

19th December
School ends at **2:00pm**



Certificates this week have been awarded for Science

Reception – Efia & Joseph
Year 1 – Edie & Rollo
Year 2 – Elisa & Frankie
Year 3 – Hanaa & Robyn
Year 4 – Adea & Aidan
Year 5 – Antonio & Violet
Year 6 – Annie & Ru

Hot Choc Friday

Year 1 – Penfield
Year 2 – Troy
Year 3 – Rosie
Year 4 – Lara
Year 5 – Lola
Year 6 – Frankie

Dates for your Diary - Class Trips

Year 1 – 21st November - Museum of London - Docklands

Year 2 – 20th November - Science Trip

Year 3 – TBC

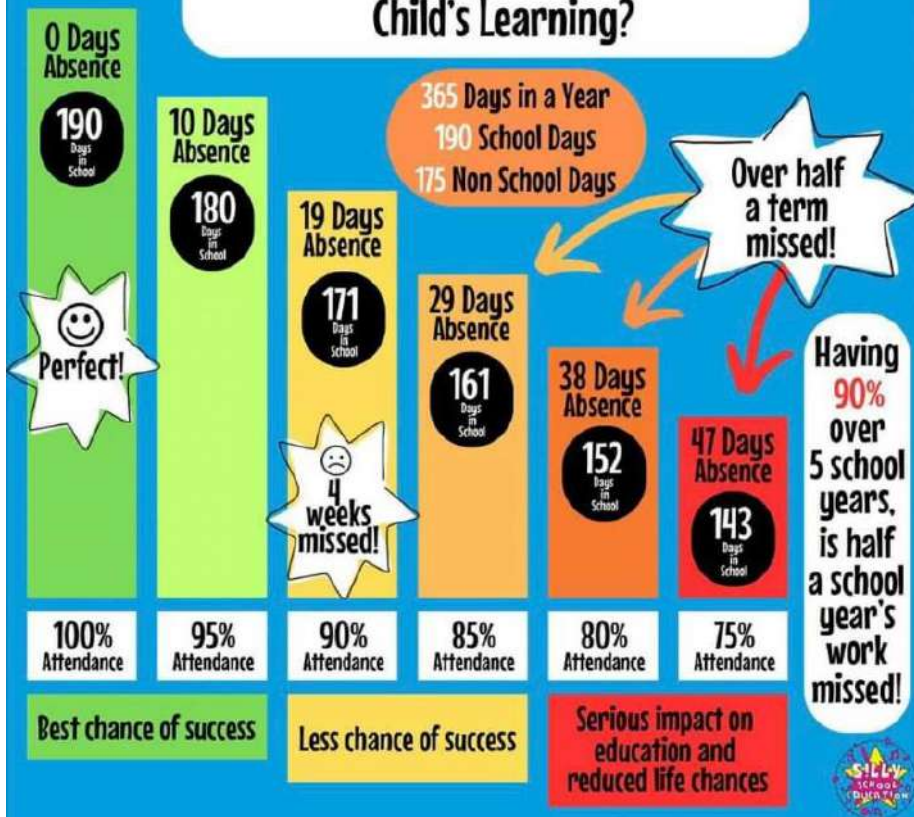
Year 4 – 28th Nov 2024 - Kung Fu Panda 4

Year 5 – 19 Nov 2024 - The Wild Robot

Year 6 – 12th November - Science Museum

Nurture Room - 20 Nov 2024 - Migration (Autism Friendly)

How Does School Attendance Affect a Child's Learning?



THE
TOGETHER SPACE



east^{of}
eden

Ride It Out

We all know parenting comes with highs and lows but SEND parenting comes with a continual fight to ensure your child is given opportunities to reach their full potential.

Come celebrate the joys, expel the anger and release the endorphins by sweating it out in a RIDE class at East of Eden and let's ride the emotional waves together!

When? Friday 8th, Wednesday 13th, Wednesday 20th, Friday 29th November at 1.30pm-2pm

Where? East Of Eden, Studio 1, 14 Hatherley Mews, E17 4QP

Cost: FREE or voluntary donation if you can

Book as many of the sessions as you like!

Head to our website to find
out more and book tickets

www.thetogetherspace.co.uk



ART FOREST SCHOOL

SENSORY SAND GARDENS

SUNDAY 24 NOVEMBER 2024

13.00-14.30

Be inspired by Japanese Zen gardens & Joseph Cornell's
'Shadow Boxes' using natural calming materials.

SEND family friendly



£14 FULL PRICE
£10 SIBLING AND SEND
£8 SUGGESTED/ PAY AS YOU CAN
BOOK HERE >>>



www.bookwhen.com/flyingsycamores

GOOD SHEPHERD STUDIOS
LEYTONSTONE, E11

FREE Family Learning Courses and workshops 2024/25



AFTER SCHOOL CLUBS – 90 minute workshops for families
 Availability: *weekdays from 3pm*

- Family cookery workshops (pizzas or energy balls)
- Family craft workshops (making board games or origami)



PARENTING SKILLS – 2 hour classes x 5 weeks for parents
 Availability: *Mon, Tues, Weds or Thurs between 09:30 and 14:30*

- Calm Parents, Calm Children
- Raising Resilient and Confident Children



SUPPORTING YOUR CHILD'S LEARNING – 2 hour classes x 5 weeks for parents
 Availability: *Mon, Tues, Weds or Thurs between 09:30 and 14:30*

- Keeping up with the children in Maths or English
- Everyday English for Parents (ESOL)
- Understanding Coding
- Navigating the world of prepaid cards and debit cards for children



LIFE SKILLS & WELLBEING – 2 hour workshops for parents
 Availability: *Mon, Tues or Weds between 09:30 and 14:30*

- E-Safety
- Making the most of AI and Chat GPT
- Budgeting/Saving Money on Your Food Shopping
- Seed sowing, plant propagation or vegetable growing (*Thurs only*)



DIGITAL SKILLS COURSES – 2 hour classes x 5 weeks for parents
 Availability: *Mon, Tues or Weds between 09:30 and 14:30*

- Microsoft Word
- Microsoft Excel
- Using Canva to produce posters, videos and social media content



CAREER BASED WORKSHOPS – 2 hour workshops for parents
 Availability: *Mon, Tues, Weds or Thurs between 09:30 and 14:30*

- Exploring a career in Customer Service
- Working with Food and Food Safety



www.walthamforest.gov.uk/adult-learning
amber.derosa@walthamforest.gov.uk

AFC LEYTON

FEMALE ONLY FOOTBALL SESSIONS

MONDAY
8-9PM
JUST PLAY: AGE 18+
(FREE* WITH CODE 6NRU7K24)
8-9PM
JUST PLAY: AGE 16-17
START 5 NOVEMBER
(FREE* WITH CODE RZGCRZM3 UNTIL JANUARY)

SATURDAY
9:30-10:15
WILDCATS: AGE 4-6
10:30-12 NOON
WILDCATS: AGE 7-11
SQUAD GIRLS : AGE 12-16

USE QR CODE TO BOOK

OR VISIT
AFCLEYTON.CO.UK/TICKETS

ALL ABILITIES WELCOME

HOW TO FIND US

OUR HOME GROUND IS SALISBURY HALL AND BLADES PLAYING FIELDS, WALTHAMSTOW E4 8ST.

TO ACCESS THE GROUND, WALK OR DRIVE INTO SAINSBURYS AND PARK AT THE REAR OF THE BUILDING. WALK THROUGH THE WHITE GATES.

THE CAR PARK OFFERS 3 HOURS OF FREE PARKING.

BUS ROUTES: 34, 97, 215, 158, 357, 397, W11 TO WALTHAMSTOW STADIUM OR LOW HALL

WALTHAM FOREST ADULT LEARNING SERVICE

Help your child grow and thrive! Family Learning

Our family learning programme delivers a variety of courses, workshops and events both in person, online and at different venues in Waltham Forest - courses and workshops are free for families.

List of upcoming courses / workshops

Course code	Course Title	Venue	Date	Time	Day
FA0382F1	Sewing and textile crafts, beginners course for parents	Queens Road Family Hub Queens Road E17	13.11.2024 11.12.2024	10 -12pm	Wednesday

Join us for a fun and engaging beginners course designed specifically for parents looking to dive into the world of sewing and textile crafts! Whether you're eager to create unique clothing for your little ones, make personalised gifts or simply explore a new hobby, this course offers the perfect starting point. Learn the basics of sewing techniques, fabric selection, and essential tools in a supportive environment. Each session includes hands on projects that will boost your confidence and ignite your creativity. Connect with fellow parents, share ideas, and leave with beautiful creations that you can cherish or gift. No prior experience necessary—just bring your enthusiasm and let's get crafting!

If you have any questions regarding family learning activities, please contact cherie.cowan-smith@walthamforest.gov.uk Curriculum Manager Family Learning

Enrol now through our website - www.lbwfadultlearning.co.uk
 For more information email adult.learning@walthamforest.gov.uk



WALTHAM FOREST ADULT LEARNING SERVICE

Help your child grow and thrive! Family Learning

Our family learning programme delivers a variety of courses, workshops and events both in person, online and at different venues in Waltham Forest - courses and workshops are free for families.

List of upcoming courses / workshops

Course Code	Course Title	Venue	Date	Time	Day
FA0291C5	Improve your Digital skills for Parents	Queens Road Learning Centre	06.11.2024 – 4.12.2024	10:00 - 12:00 pm	Wednesday
FA0255C4	Calm Parents, Calm Children - Parenting	ONLINE	07.11.2024 – 05.12.2024	7:30 – 9:30 pm	Thursday
FA0300F1	Create a Seasonal Wreath - Families learning together	Walthamstow library	09.11.2024	12:30 - 2:30pm	Saturday
FA0146C3	A Parent's Guide to Understanding Phonics KS1	Queens Road Learning Centre	13.11.2024	1:00 pm- 2:30pm	Wednesday
FA0382F1	Sewing & Textile Crafts: A Beginner's Course for Parents	Queens Road Family Hub	13.11.2024 – 11.12.2024	10:00 – 12:00pm	Wednesday
FA0399F1	Decorating Festive Iced biscuits	Community Farm Kitchen, E11 3NH	30.11.2024	2:00pm – 3:00pm	Saturday
FA0189C4	Create a Festive Christmas Tree Decoration	Lea Bridge Road Library	07.12.2024 – 07.11.2024	12:30 - 2:30pm	Saturday

Enrol now through our website - www.lbwfadultlearning.co.uk
 For more information email adult.learning@walthamforest.gov.uk





Barn Croft Primary School Calendar 2024-2025

Autumn Term 2024 (74 days)

Monday 2nd September
Tuesday 3rd September

Staff Training Day – **School Closed**
Staff Training Day – **School Closed**

Wednesday 4th September

School Starts

Friday 18th October

School Ends – Last Day of Half-Term

Monday 21st October - Friday 25th October

Half-Term Holiday – **School Closed**

Monday 28th October

Staff Training Day – **School Closed**

Tuesday 29th October

School Starts

Thursday 19th December

School Ends at 2:00pm - Last Day of Term

Friday 20th December – Friday 3rd January

Christmas Holiday – **School Closed**

Spring Term 2025 (60 days)

Monday 6th January

Staff Training Day – **School Closed**

Tuesday 7th January

School Starts

Friday 14th February

School Ends – Last Day of Half-Term

Monday 17th February - Friday 21st February

Half-Term Holiday – **School Closed**

Monday 24th February

School Starts

Friday 4th April

School Ends at 2:00pm - Last Day of Term

Monday 7th April – Monday 21st April

Easter Holiday – **School Closed**

Summer Term 2025 (61 days)

Tuesday 22nd April

School Starts

Monday 5th May

Bank Holiday – **School Closed**

Friday 23rd May

School Ends – Last Day of Half-Term

Monday 26th May - Friday 30th May

Half-Term Holiday – **School Closed**

Monday 2nd June

Staff Training Day – **School Closed**

Tuesday 3rd June

School Starts

Wednesday 23rd July

School Ends at 2:00pm - Last Day of Term