

# The Barn Croft Newsletter

*Courage, Love, Excellence*

Dear Parents and Carers,

What a busy and exciting week we've had here at Barn Croft!

Lots of our classes have been out and about on trips, and it's been wonderful hearing about their adventures. Nurture Group, Year 5 and Year 6 enjoyed cinema visits as part of a Film Festival, Year 2 explored the Natural History Museum, and Year 1 had an amazing time at the Docklands Museum. A special thank you to the parents who kindly supported these trips—your help makes all the difference! The teachers were so proud of the children, who were a real credit to our school throughout.

On Monday, we had a visit from Mrs. Schweitzer, who joined us for an assembly to introduce herself to the children. She asked the children to share the best things about Barn Croft, and thank you to parents for giving her a warm welcome at the gates.

This week, the children have been working incredibly hard on their assessments. These will help teachers and leaders plan for the spring term and provide additional support or interventions where needed. Please do take a moment to celebrate your child's efforts and achievements this week with them—they deserve it!

Finally, as we head into the weekend, please stay safe during the stormy weather. We look forward to seeing everyone back next week, refreshed and ready for more learning and fun.

Miss Kelly  
Acting Headteacher

## Key Diary Dates

**26<sup>th</sup> November**  
Maths Workshop  
**9:00-10:00am in Hall**

**29<sup>th</sup> November**  
Year 2 Bake sale

**7<sup>th</sup> December**  
Winter Fair  
**11-12am SEND time**  
**12-3pm**

**10<sup>th</sup> December**  
KS1 Christmas Show  
**9:30-10:30am in Hall**

**10<sup>th</sup> December**  
Pantomime  
**1:30-3:00pm in Hall**

**11<sup>th</sup> December**  
EYFS Christmas Show  
**9:30-10:00am in Hall**

**19<sup>th</sup> December**  
School ends at **2:00pm**

**29<sup>th</sup> December – 3<sup>rd</sup> January**  
Christmas Holiday

Non-Uniform Day

Friday 29<sup>th</sup>  
November

Year 1 & Year 3



Certificates this week have been awarded for *French*

Reception – Siar & Will  
Year 1 – Fred & Penfield  
Year 2 – Ellie & Rufat  
Year 3 – Betsy & Raluca  
Year 4 – Ezra & Lily  
Year 5 – Maham & Rosalie  
Year 6 – Liam & Nateisha

Hot Choc Friday

Year 1 – Ellen  
Year 2 – Kai  
Year 3 – Harry  
Year 4 – Orson  
Year 5 – Anelka  
Year 6 – Taro

## Dates for your Diary - Class Trips

**Year 1 – 21st November – Museum of London – Docklands**

**Year 2 – 20th November – Science Trip**

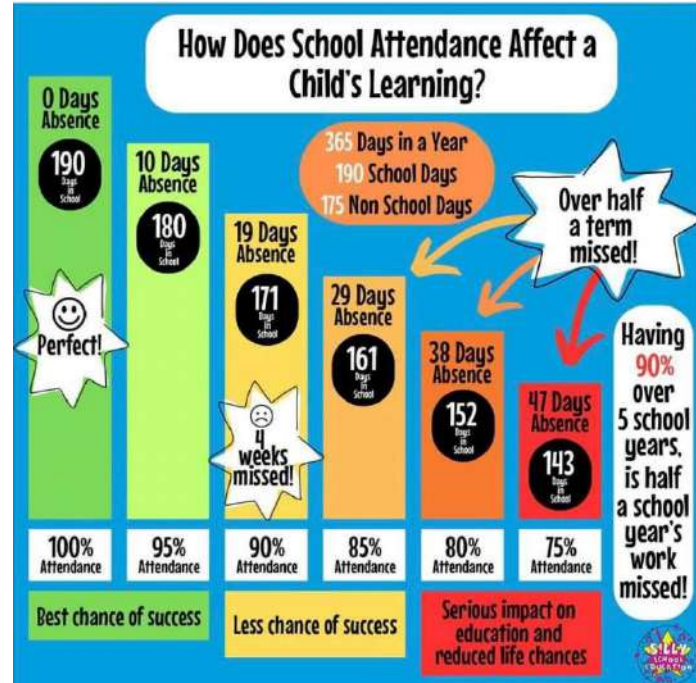
**Year 3 – TBC**

**Year 4 – 28th Nov 2024 - Kung Fu Panda 4**

**Year 5 – 19 Nov 2024 – The Wild Robot**

**Year 6 – 12th November – Science Museum**

**Nurture Room – 20 Nov 2024 – Migration (Autism Friendly)**



## Draw your teacher!!

Barn Croft Calendar 2025



Want to have your artwork in Barn Croft's very own calendar?... then you're in luck.

The Barn Croft Xmas Elves are busy collecting handdrawn pictures of all your lovely teachers - drawn by YOU - to be included in 'the best in the whole entire world calendar for 2025'!

What you have to do...

- Draw a picture of your teacher/teaching staff (colourful as you can)
- A4 Portrait
- Add the name of your teacher/teaching staff at the top of the picture and of course your name, so we all know who drew it!
- Get your adult to take a picture/scan of your drawing and send it to your class representative
- All this has to be done by Monday 25th November '24!

Up for it?... go on then - off you go... get creative!!

Please send to Anna Motture [annamotture@gmail.com](mailto:annamotture@gmail.com)



Parents/ Carers of children in Reception, Year 1 and Year 2, you are invited to our

### Parent Maths Workshop

- ★ Do you want to know how maths is taught in our school?
- ★ Would you like fun games and resources to help support your child with maths at home?

Please come along to our Maths Workshop in school where we'll guide you through how we teach maths at Barn Croft and share strategies you can use to support your child's learning at home.

<b>When:</b>	Tuesday 26th November 2024 from 9 to 10 am
<b>Where:</b>	Barn Croft School Hall
<b>Who:</b>	Parents and Carers of children in Reception, Year 1 and Year 2.

We are encouraging all parents to attend, but children may be supported by another significant adult - i.e. grandparent, other relative, close family friend - who can share the workshop ideas and homework plan with the parents for ongoing support.

We need to know numbers so please sign up below! We would love to see you! To sign up please fill the form [attached here](#), or scan the QR code below.





THE  
TOGETHER SPACE



east<sup>of</sup>  
eden

## Ride It Out

We all know parenting comes with highs and lows but SEND parenting comes with a continual fight to ensure your child is given opportunities to reach their full potential.

Come celebrate the joys, expel the anger and release the endorphins by sweating it out in a RIDE class at East of Eden and let's ride the emotional waves together!

**When?** Friday 8th, Wednesday 13th, Wednesday 20th, Friday 29th November at 1.30pm-2pm

**Where?** East Of Eden, Studio 1, 14 Hatherley Mews, E17 4QP

**Cost:** FREE or voluntary donation if you can

**Book as many of the sessions as you like!**

Head to our website to find  
out more and book tickets

[www.thetogetherspace.co.uk](http://www.thetogetherspace.co.uk)

## Christmas Holidays

23rd December '24

27th December

30th December

2nd-3rd January '25

Woodford Wells Club

(Woodford Green, IG8 0NL)

Available for ages 3-12



Ages 5-12: 8:30-5:30pm\*

Ages 3-4: 8:30-12:30 / 1-5pm\*

\*8:30-9:30 drop off 4:30-5:30 pick up

Extended 8-6pm available

### BOOK ONLINE

[www.Camp-Wild.co.uk](http://www.Camp-Wild.co.uk)

07414 274 015

[info@camp-wild.co.uk](mailto:info@camp-wild.co.uk)

£37.95/d / £159.95wk (ages 5-12)

### Camp Cubs

£27.95/d / £124.95wk (ages 3-4)

[info@camp-cubs.co.uk](mailto:info@camp-cubs.co.uk)

Childcare Vouchers Accepted

OFSTED Registered



ART FOREST SCHOOL

## SENSORY SAND GARDENS

SUNDAY 24 NOVEMBER 2024

13.00-14.30

Be inspired by Japanese Zen gardens & Joseph Cornell's

'Shadow Boxes' using natural calming materials.

SEND family friendly



£14 FULL PRICE  
£10 SIBLING AND SEND  
£8 SUGGESTED/ PAY AS YOU CAN  
**BOOK HERE >>>**



GOOD SHEPHERD STUDIOS



## FREE Family Learning Courses and workshops 2024/25



### AFTER SCHOOL CLUBS – 90 minute workshops for families

Availability: weekdays from 3pm

- Family cookery workshops (pizzas or energy balls)
- Family craft workshops (making board games or origami)



### PARENTING SKILLS – 2 hour classes x 5 weeks for parents

Availability: Mon, Tues, Weds or Thurs between 09:30 and 14:30

- Calm Parents, Calm Children
- Raising Resilient and Confident Children



### SUPPORTING YOUR CHILD'S LEARNING – 2 hour classes x 5 weeks for parents

Availability: Mon, Tues, Weds or Thurs between 09:30 and 14:30

- Keeping up with the children in Maths or English
- Everyday English for Parents (ESOL)
- Understanding Coding
- Navigating the world of prepaid cards and debit cards for children



### LIFE SKILLS & WELLBEING – 2 hour workshops for parents

Availability: Mon, Tues or Weds between 09:30 and 14:30

- E-Safety
- Making the most of AI and Chat GPT
- Budgeting/Saving Money on Your Food Shopping
- Seed sowing, plant propagation or vegetable growing (Thurs only)



### DIGITAL SKILLS COURSES – 2 hour classes x 5 weeks for parents

Availability: Mon, Tues or Weds between 09:30 and 14:30

- Microsoft Word
- Microsoft Excel
- Using Canva to produce posters, videos and social media content



### CAREER BASED WORKSHOPS – 2 hour workshops for parents

Availability: Mon, Tues, Weds or Thurs between 09:30 and 14:30

- Exploring a career in Customer Service
- Working with Food and Food Safety



Waltham Forest

[www.walthamforest.gov.uk/adult-learning](http://www.walthamforest.gov.uk/adult-learning)  
[amber.derosa@walthamforest.gov.uk](mailto:amber.derosa@walthamforest.gov.uk)

# AFC LEYTON

## FEMALE ONLY FOOTBALL SESSIONS

**MONDAY 8-9PM**  
**JUST PLAY: AGE 18+**  
 (FREE\* WITH CODE 6NRU7K24)  
**8-9PM**  
**JUST PLAY: AGE 16-17**  
 START 9 NOVEMBER  
 (FREE\* WITH CODE RZ6CRZJ3 UNTIL JANUARY)

**SATURDAY 9:30-10:15**  
**WILDCATS: AGE 4-6**  
**10:30-12 NOON**  
**WILDCATS: AGE 7-11**  
**SQUAD GIRLS: AGE 12-16**

**TUESDAY 6-7:30PM**  
**WILDCATS: AGE 7-11**  
**SQUAD GIRLS: AGE 12-16**

**ALL ABILITIES WELCOME**

USE QR CODE TO BOOK

OR VISIT  
[AFCLEYTON.CO.UK/TICKETS](http://AFCLEYTON.CO.UK/TICKETS)

**HOW TO FIND US**

OUR HOME GROUND IS SALISBURY HALL AND BLADES PLAYING FIELDS, WALTHAMSTOW E4 8ST.

TO ACCESS THE GROUND, WALK OR DRIVE INTO SAINSBURYS AND PARK AT THE REAR OF THE BUILDING. WALK THROUGH THE WHITE GATES.

THE CAR PARK OFFERS 3 HOURS OF FREE PARKING.

BUS ROUTES: 34, 97, 215, 158, 357, 397, W11 TO WALTHAMSTOW STADIUM OR LOW HALL

WALTHAM FOREST ADULT LEARNING SERVICE

## Help your child grow and thrive! Family Learning

Our family learning programme delivers a variety of courses, workshops and events both in person, online and at different venues in Waltham Forest - courses and workshops are free for families.

### List of upcoming courses / workshops

Course code	Course Title	Venue	Date	Time	Day
FA0382F1	Sewing and textile crafts, beginners course for parents	Queens Road Family Hub Queens Road E17	13.11.2024 – 11.12.2024	10 - 12pm	Wednesday

Join us for a fun and engaging beginners course designed specifically for parents looking to dive into the world of sewing and textile crafts! Whether you're eager to create unique clothing for your little ones, make personalised gifts or simply explore a new hobby, this course offers the perfect starting point. Learn the basics of sewing techniques, fabric selection, and essential tools in a supportive environment. Each session includes hands on projects that will boost your confidence and ignite your creativity. Connect with fellow parents, share ideas, and leave with beautiful creations that you can cherish or gift. No prior experience necessary—just bring your enthusiasm and let's get crafting!

If you have any questions regarding family learning activities, please contact [cherie.cowan-smith@walthamforest.gov.uk](mailto:cherie.cowan-smith@walthamforest.gov.uk) Curriculum Manager Family Learning

WALTHAM FOREST ADULT LEARNING SERVICE

## Help your child grow and thrive! Family Learning

Our family learning programme delivers a variety of courses, workshops and events both in person, online and at different venues in Waltham Forest - courses and workshops are free for families.

### List of upcoming courses / workshops

Course Code	Course Title	Venue	Date	Time	Day
FA0291C5	Improve your Digital skills for Parents	Queens Road Learning Centre	06.11.2024 – 4.12.2024	10:00 - 12:00 pm	Wednesday
FA0255C4	Calm Parents, Calm Children - Parenting	ONLINE	07.11.2024 – 05.12.2024	7:30 – 9:30 pm	Thursday
FA0300F1	Create a Seasonal Wreath - Families learning together	Walthamstow library	09.11.2024	12:30 - 2:30pm	Saturday
FA0146C3	A Parent's Guide to Understanding Phonics KS1	Queens Road Learning Centre	13.11.2024	1:00 pm- 2:30pm	Wednesday
FA0382F1	Sewing & Textile Crafts: A Beginner's Course for Parents	Queens Road Family Hub	13.11.2024 – 11.12.2024	10:00 – 12:00pm	Wednesday
FA0399F1	Decorating Festive Iced biscuits	Community Farm Kitchen, E11 3NH	30.11.2024	2:00pm – 3:00pm	Saturday
FA0189C4	Create a Festive Christmas Tree Decoration	Lea Bridge Road Library	07.12.2024 – 07.11.2024	12:30 - 2:30pm	Saturday





# Barn Croft Primary School Calendar 2024-2025

## **Autumn Term 2024** (74 days)

Monday 2<sup>nd</sup> September  
Tuesday 3<sup>rd</sup> September

Staff Training Day – **School Closed**  
Staff Training Day – **School Closed**

### **Wednesday 4<sup>th</sup> September**

**School Starts**

Friday 18<sup>th</sup> October

School Ends – Last Day of Half-Term

Monday 21<sup>st</sup> October - Friday 25<sup>th</sup> October

Half-Term Holiday – **School Closed**

Monday 28<sup>th</sup> October

Staff Training Day – **School Closed**

### **Tuesday 29<sup>th</sup> October**

**School Starts**

Thursday 19<sup>th</sup> December

School Ends at 2:00pm - Last Day of Term

Friday 20<sup>th</sup> December – Friday 3<sup>rd</sup> January

Christmas Holiday – **School Closed**

## **Spring Term 2025** (60 days)

Monday 6<sup>th</sup> January

Staff Training Day – **School Closed**

### **Tuesday 7<sup>th</sup> January**

**School Starts**

Friday 14<sup>th</sup> February

School Ends – Last Day of Half-Term

Monday 17<sup>th</sup> February - Friday 21<sup>st</sup> February

Half-Term Holiday – **School Closed**

### **Monday 24<sup>th</sup> February**

**School Starts**

Friday 4<sup>th</sup> April

School Ends at 2:00pm - Last Day of Term

Monday 7<sup>th</sup> April – Monday 21<sup>st</sup> April

Easter Holiday – **School Closed**

## **Summer Term 2025** (61 days)

### **Tuesday 22<sup>nd</sup> April**

**School Starts**

Monday 5<sup>th</sup> May

Bank Holiday – **School Closed**

Friday 23<sup>rd</sup> May

School Ends – Last Day of Half-Term

Monday 26<sup>th</sup> May - Friday 30<sup>th</sup> May

Half-Term Holiday – **School Closed**

Monday 2<sup>nd</sup> June

Staff Training Day – **School Closed**

### **Tuesday 3<sup>rd</sup> June**

**School Starts**

Wednesday 23<sup>rd</sup> July

School Ends at 2:00pm - Last Day of Term

